

# Hilliard City Schools

## Playground Improvements 2025

**Progress Update**  
March 24, 2025



# Playground bidding process

- Six playgrounds went to bid for Phase I of the Playground Improvement projects.
- Bidding took place February 26- March 14.
- Total of 4 bids submitted.
- Byrne and Jones Enterprises selected as prime contractor and they will be working with Landscape Structures, Inc.
- Shade canopies were listed as an alternate in the bid. Byrne and Jones' bid came in 3.95% under the published bid of \$3,000,000, therefore, the alternate for shade canopies was accepted.





# Phase I Playgrounds

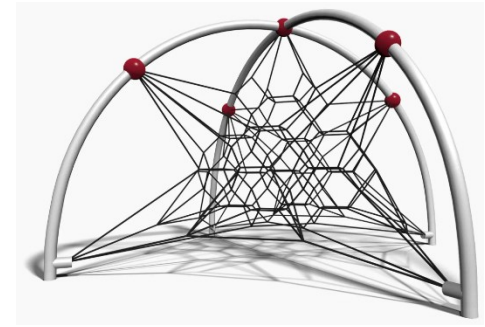
**Avery - Britton – Crossing - Horizon - J.W. Reason - Norwich**



1



2



3



4



5



6



7



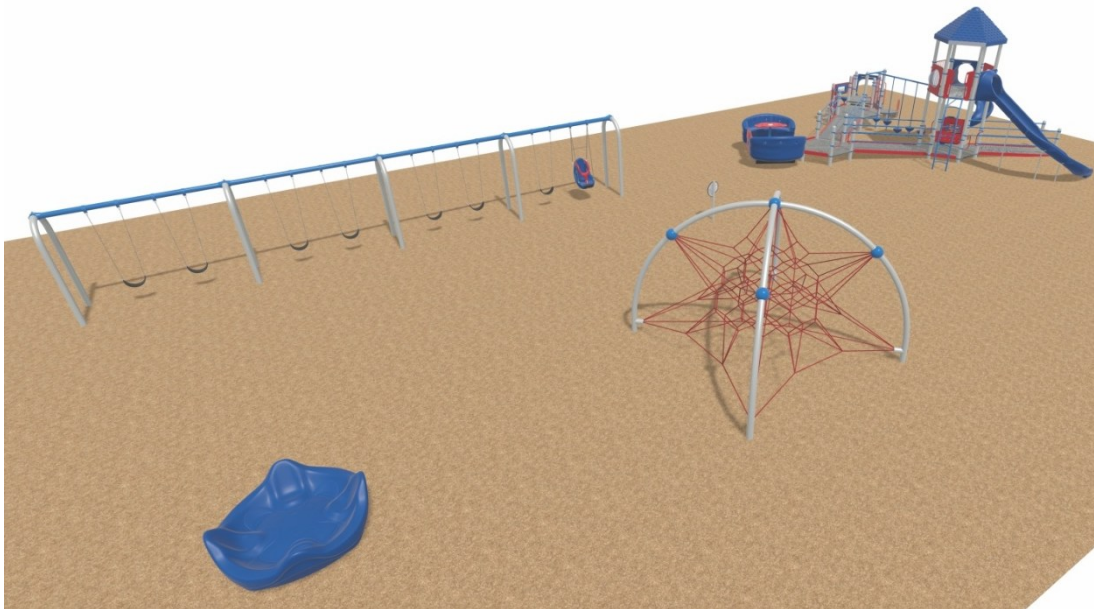
8



9

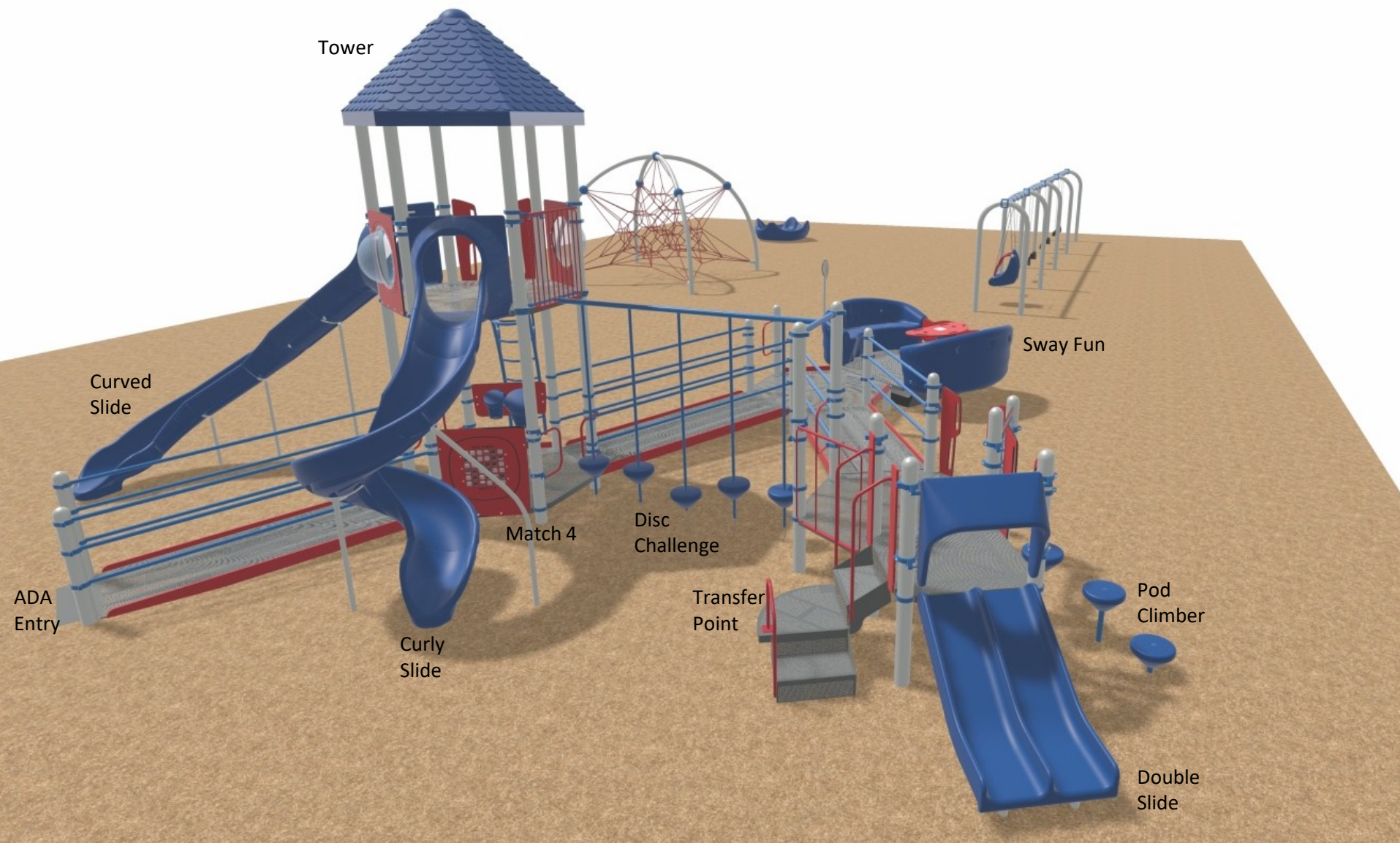
# Playground Equipment





## Soft Surface Components



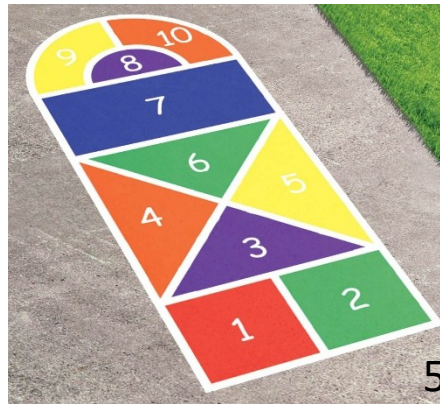
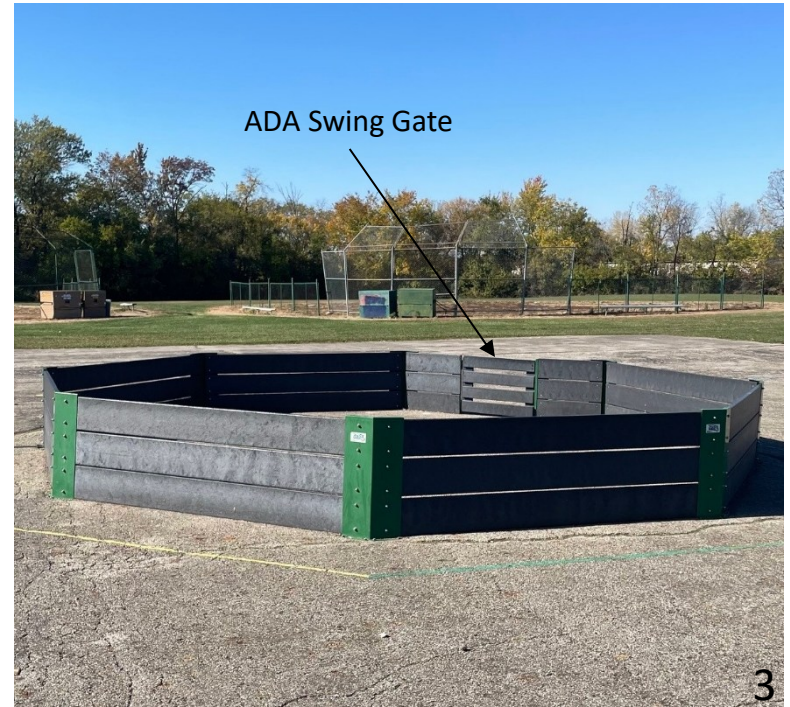


## Large Composite Structure



**Large Composite Structure**





## Hard Surface Components



# Site and Design Considerations



**SITE**



**DESIGN**

# Safety Features



## Impact-absorbing surfaces

Acceptable: engineered wood fiber, splinter-free mulch, sand, pea gravel, rubber, mats, turf



## Proper spacing and height for equipment

Minimum of 72" is required around all playground equipment. No openings on playground equipment that measures between 3 ½" – 9".



## Protrusion and Entanglement Hazards.

Components that can impale or cut if fallen against or catch clothing



## Observation and Surveillance

More centralized play areas increases safety and security.



# Accessibility Standards

## Travel Route

- Provide an accessible travel route through a soft-surface play area, a minimum of 5 feet wide, with a maximum of 20:1 (5%) slope. Choice of surfacing and minimum areas of surfacing required shall comply with Americans with Disabilities Act guidelines and ASTM F 1951.

## Structures

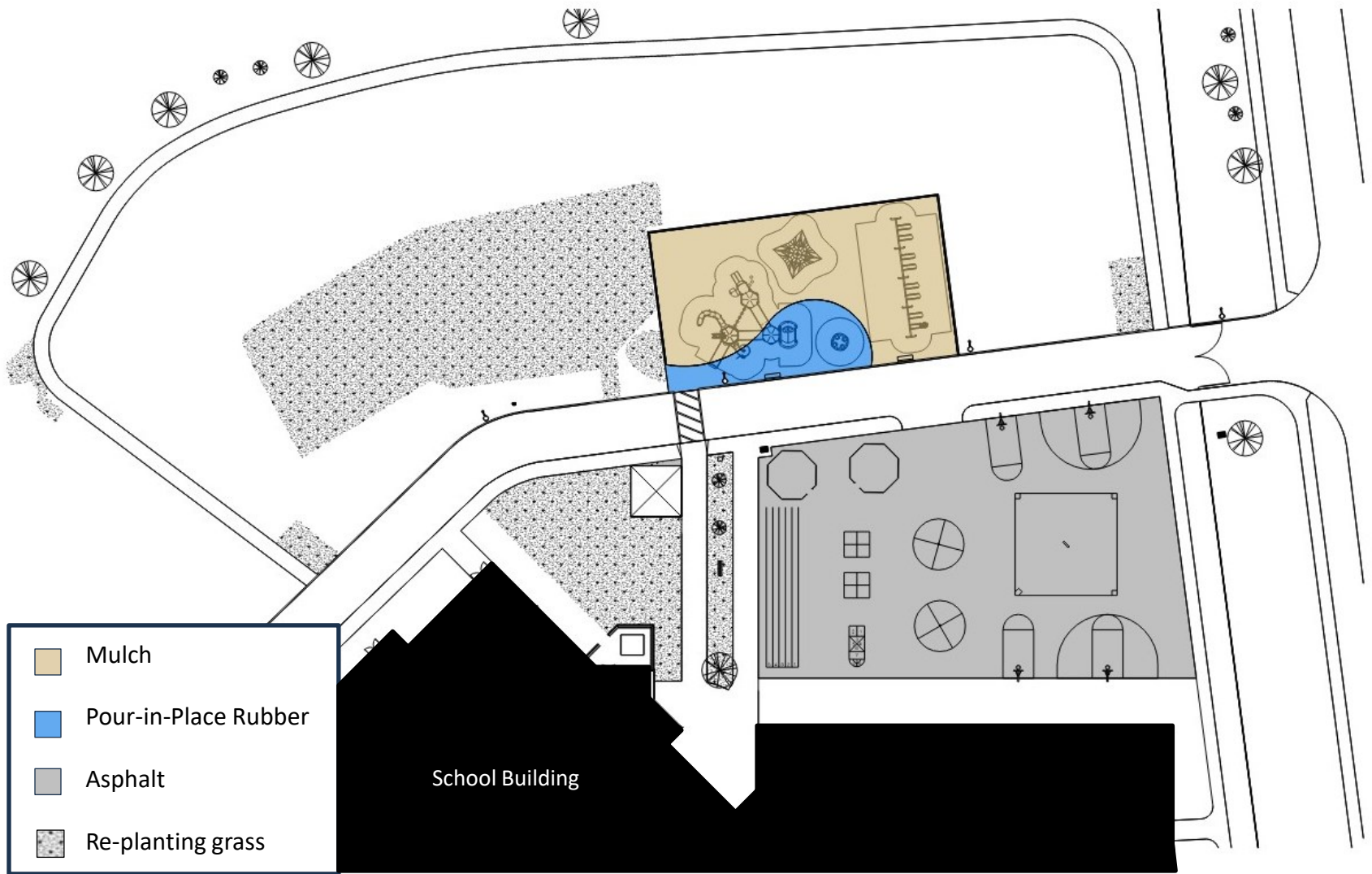
- Provide ramps and/or transfer points on composite play structures for access to play components on elevated decks. Meet the Americans with Disabilities Act guidelines for the percentage of components that are to be accessible by ramp and by transfer deck.

## Seating

- Provide tables and benches along accessible routes.

## Age Group

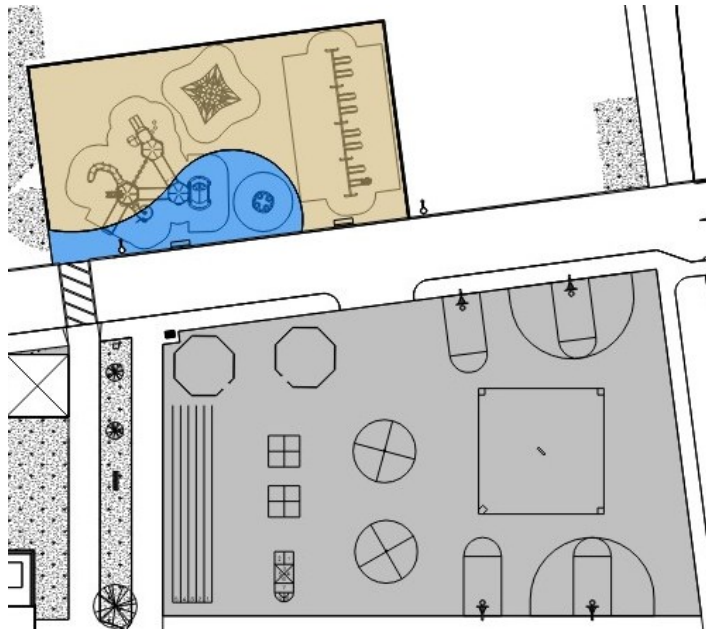
- Provide upper body strengthening devices as appropriate for the age group and amount of supervision.



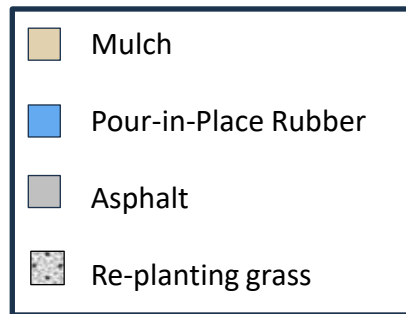
Horizon Site Plan Example

# Horizon Elementary Playground Example





Horizon Site Plan Example



Engineered Wood Fiber Mulch



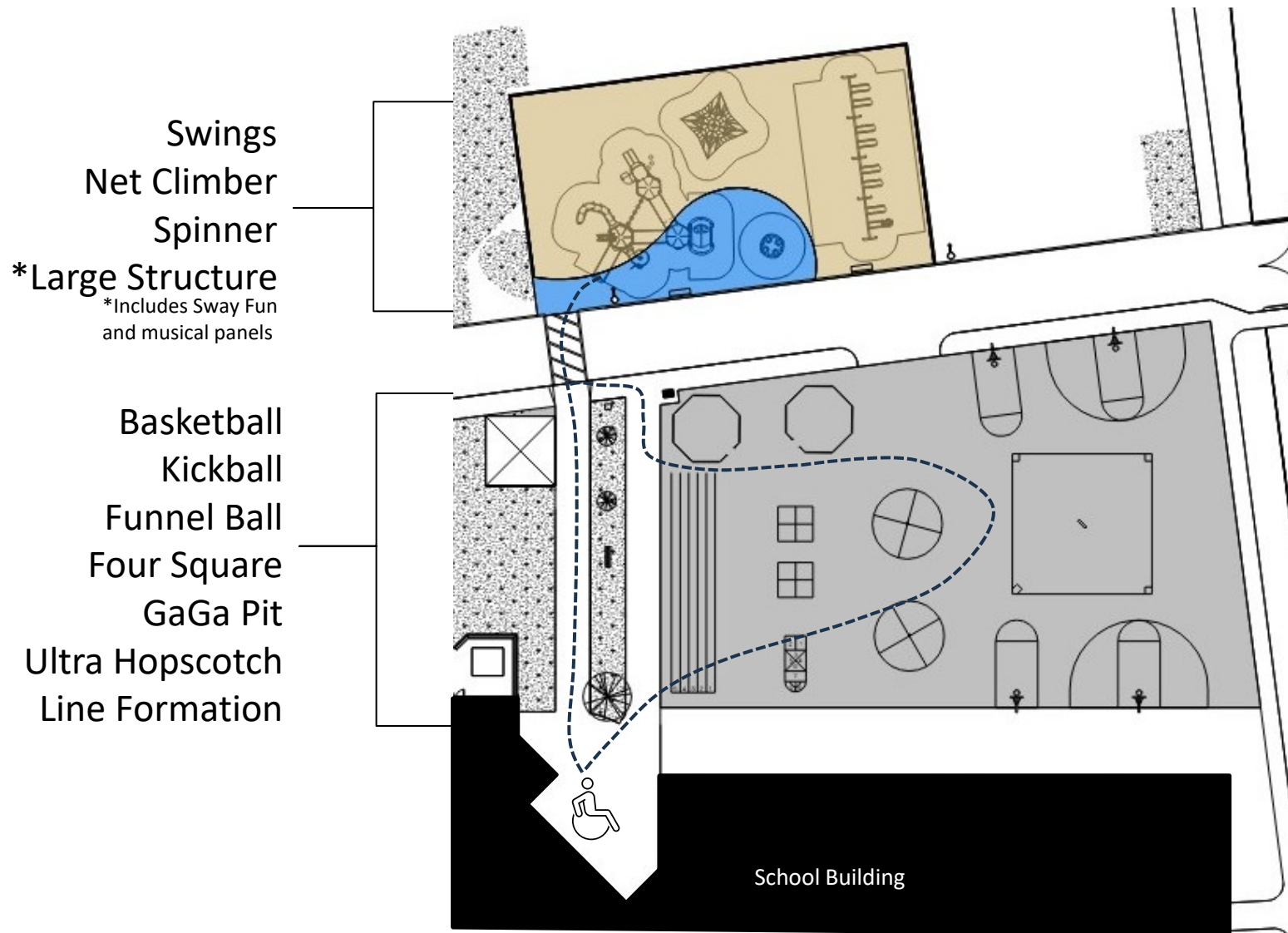
Pour-in-Place



Asphalt and Striping

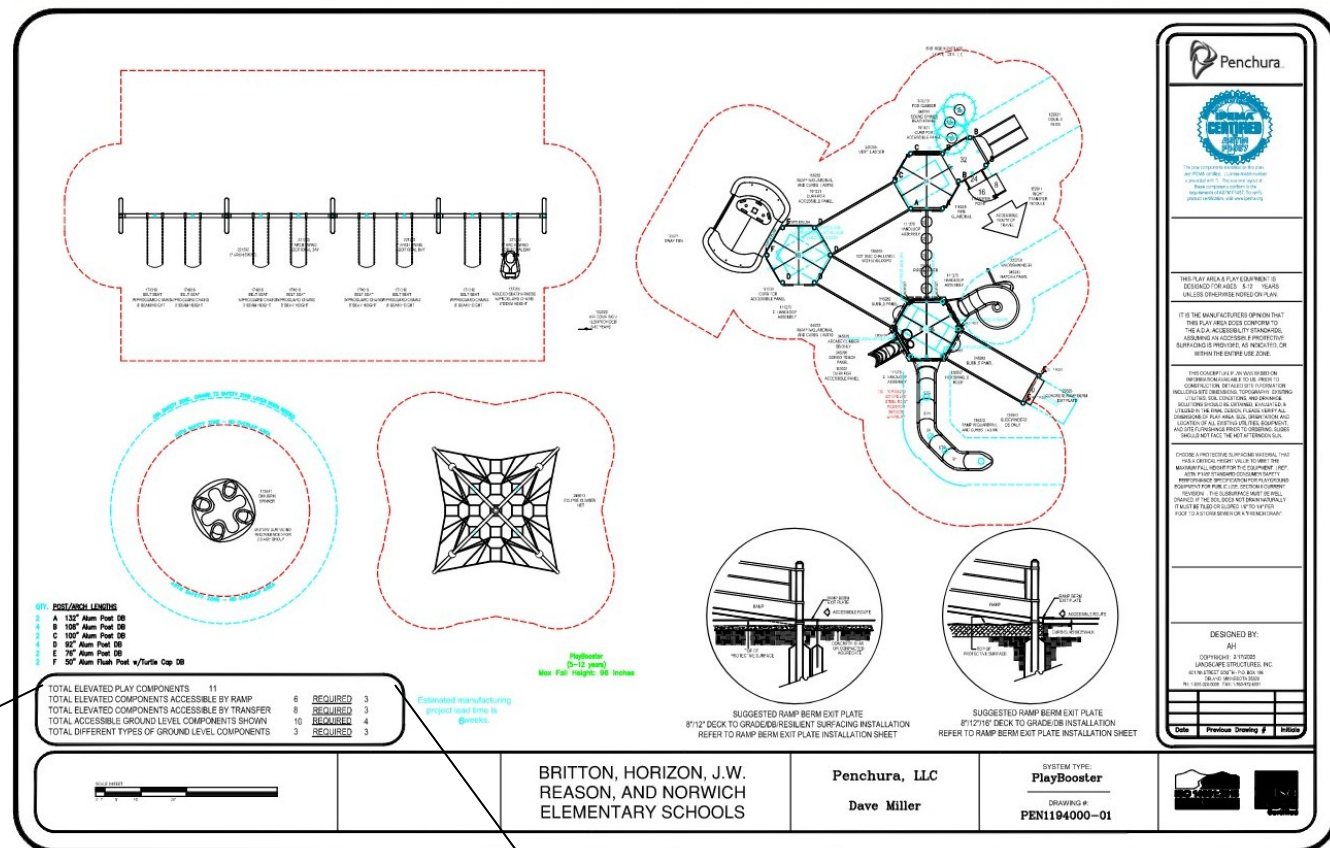
## Surfacing Materials

# Horizon Elementary Playground Example




**Horizon Elementary Playground Example**





TOTAL ELEVATED PLAY COMPONENTS	11		
TOTAL ELEVATED COMPONENTS ACCESSIBLE BY RAMP	6	<u>REQUIRED</u>	3
TOTAL ELEVATED COMPONENTS ACCESSIBLE BY TRANSFER	8	<u>REQUIRED</u>	3
TOTAL ACCESSIBLE GROUND LEVEL COMPONENTS SHOWN	10	<u>REQUIRED</u>	4
TOTAL DIFFERENT TYPES OF GROUND LEVEL COMPONENTS	3	<u>REQUIRED</u>	3

# ADA Accessibility Requirements



By thoughtfully selecting equipment and designing an inclusive playground layout, we aim to create a safe, accessible, and welcoming space that offers a variety of activities to engage children physically, socially, and cognitively.

Our goal is to ensure that every child, regardless of ability, can enjoy and benefit from playing outside.

# Questions & Answers