



(#1 ORCHESTRA TUNE-UP.)

SCENE 1: PRIDE ROCK

(Before the dawn, an old mandrill, RAFIKI, enters and calls out. VOICES respond as the sun rises. #2 CIRCLE OF LIFE WITH NANTS' INGONYAMA.)

CIRCLE OF LIFE WITH NANTS' INGONYAMA

RAFIKI:

Musical notation for Rafiki's first line, starting with a treble clef and a 4/4 time signature. The lyrics are: Nan - ts'in-go - nya - ma, ba -

Nan - ts'in-go - nya - ma, ba -

Musical notation for Rafiki's second line, starting with a treble clef and a 2/4 time signature. The lyrics are: ki - thi, ba-ba.

ki - thi, ba-ba.

ENSEMBLE 1:

Musical notation for Ensemble 1's first line, starting with a treble clef and a 2/4 time signature. The lyrics are: Si - thi hu.

Si - thi hu.

ENSEMBLE 2:

Musical notation for Ensemble 2's first line, starting with a treble clef and a 2/4 time signature. The lyrics are: Si - thi hu 'ngo-nya - ma.

Si - thi hu 'ngo-nya - ma.

(ENSEMBLE 1):

Musical notation for Ensemble 1's second line, starting with a treble clef and a 2/4 time signature. The lyrics are: 'Ngo-nya - ma neng - we bo.

'Ngo-nya - ma neng - we bo.

(ENSEMBLE 2):

Musical notation for Ensemble 2's second line, starting with a treble clef and a 2/4 time signature. The lyrics are: 'Ngo-nya - ma neng - we bo.

6 **RAFIKI:**

Nan — ts'in-go - nya - ma, ba - ki - thi ba-bo.

ALL:

Si-thi

8

He-le-le!

hu 'ngo-nya - ma. 'Ngo-nya - ma.

10

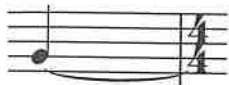
Si - zo ngo'!

'Ngo - nya - ma.

11

He-le-le!

'Ngo-nya - ma. 'Ngo-nya - ma.

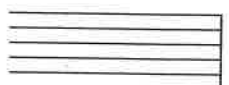


-bo.

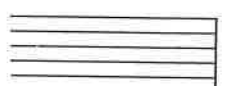
ALL:



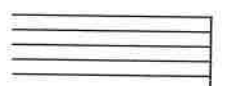
Si-thi



o-nya - ma.



ma.



-nya - ma.

13

I - ngo-nya - ma neng - we 'na - ma - ba - la.

14 ALL:

I - ngo-nya - ma neng - we 'na - ma ba - la.

15

I - ngo-nya - ma neng - we 'na - ma ba - la.

16

I - ngo-nya - ma neng - we 'na - ma ba - la.

17 RAFIKI:

p From the

I - ngo-nya - ma neng - we 'na - ma ba - la.

(RAFIKI):

18

day we ar - rive_____ on the

(ALL):

I - ngo-nya - ma neng - we 'na-ma-ba - la.

19

pla - net and

I - ngo-nya - ma neng - we 'na-ma-ba - la.

20

blink - ing step in - to the sun,

I - ngo-nya - ma neng - we 'na-ma-ba - la.

21

there is

I - ngo-nya - ma neng - we 'na-ma-ba - la.

the
a - la.

and
a - la.

the sun,
- la.

ere is
a - la.

22

more to see — than can
I - ngo - nya - ma neng - we 'na - ma - ba - la.

23

e - ver be seen, — more to
I - ngo - nya - ma neng - we 'na - ma - ba - la.

24

do than can e - ver — be
I - ngo - nya - ma neng - we 'na - ma - ba - la.

25

done. There is
I - ngo - nya - ma neng - we 'na - ma - ba - la.

26 (RAFIKI):

far to much to take in—

(ALL):

I - ngo-nya - ma neng - we 'na - ma - ba - la.

27

— here. More to find

I - ngo-nya - ma neng - we 'na - ma - ba - la.

28

— than can e - ver be

I - ngo-nya - ma neng - we 'na - ma - ba - la.

29

found. But the

I - ngo-nya - ma neng - we 'na - ma - ba - la.

take in
-ba - la.

lore to find
ba - la.

be
-ba - la.

But the
-ba - la.

30

sun roll - ing high through the
I - ngo - nya - ma neng - we 'na - ma - ba - la.

31

sap - phi - re sky keeps great and
I - ngo - nya - ma neng - we 'na - ma - ba - la.

32

small on the end - less
I - ngo - nya - ma neng - we 'na - ma - ba - la.

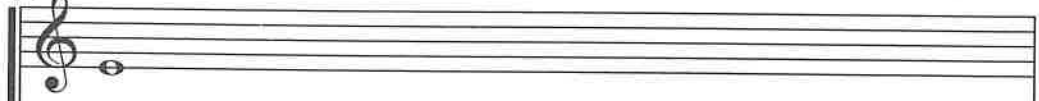
33

ENSEMBLE 1: 3

round. It's the cir - cle of
ENSEMBLE 2:
I - ngo - nya - ma neng - we 'na - ma - ba - la.

(Pride Rock comes into view above the gathering menagerie. A hornbill, ZAZU, reverently bows to a regal lion, MUFASA, and his mate, SARABI. RAFIKI hobbles through the crowd, climbs to the promontory, and embraces MUFASA, who carries a royal symbol. SARABI nestles her newborn cub in her paws. RAFIKI rattles gourds over the cub and smears nectar on his forehead.)

34 (ENSEMBLE 1):



life

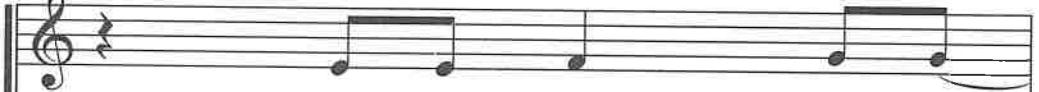
(ENSEMBLE 2):



mf

I - ngo-nya - ma neng - we we-ma.

35

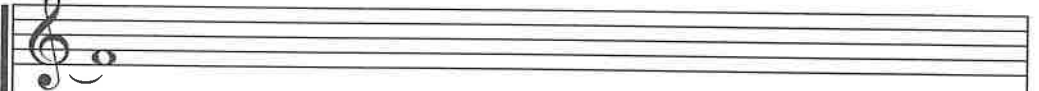


and it moves us all—



I - ngo-nya - ma neng - we we-ma.

36



I - ngo-nya - ma neng - we we-ma.

agerie. A
FASA, and his
climbs to the
royal symbol.
KI rattles gourds

37

through des - pair and

I - ngo-nya - ma neng - we we-ma.

38

hope,

I - ngo-nya - ma neng - we we-ma.

39

through faith and

I - ngo-nya - ma neng - we we-ma.

40

love.

I - ngo-nya - ma neng - we we-ma.

a.

a.

41 (ENSEMBLE 1):

'Til we find our

(ENSEMBLE 2):

I - ngo-nya - ma neng - we we-ma.

42

place

I - ngo-nya - ma neng - we we-ma.

43

on the path un - win -

I - ngo-nya - ma neng - we we-ma.

44

ding

I - ngo-nya - ma neng - we we-ma.

our

a.

a.

win -

a.

45

in the

I - ngo-nya - ma neng - we we-ma.

46

cir - cle,

I - ngo-nya - ma neng - we we-ma.

47

the cir - cle of

I - ngo-nya - ma neng - we we-ma.

48

life.

I - ngo-nya - ma neng - we 'na-ma-ba - la.

(RAFIKI gently lifts and presents baby Simba to his SUBJECTS, who react with jubilation.)

49

It's the cir - cle of

I - ngo-nya - ma neng - we 'na - ma - ba - la.

50 (ENSEMBLE 1):

life

A FEW VOICES:

f Ba - le - k'in-gon - ya - m'i ya ga -

(ENSEMBLE 2):

I - ngo-nya - ma neng - we we - ma.

51

and it moves us all

le!

I - ngo-nya - ma neng - we we - ma.

SUBJECTS, who

cle of

a - la.

i - m'i ya ga -

us all

through faith and

I - ngo-nya - ma neng - we we-ma.

52 (ENSEMBLE 1):

(ENSEMBLE 2):

I - ngo-nya - ma neng - we we-ma.

53

through des - pair and

I - ngo-nya - ma neng - we we-ma.

54

hope,

I - ngo-nya - ma neng - we we-ma.

55

through faith and

I - ngo-nya - ma neng - we we-ma.

(ENSEMBLE 1):

56

love.

(ENSEMBLE 2):

I - ngo-nya - ma neng - we we-ma.

57

'Til we find our

I - ngo-nya - ma neng - we we-ma.

58

place

I - ngo-nya - ma neng - we we-ma.

59

on the path un - win -

I - ngo-nya - ma neng - we we-ma.

na.

our

ma.

win -

na.

ding

I - ngo-nya - ma neng - we we-ma.

in the

I - ngo-nya - ma neng - we we-ma.

cir - cle,

I - ngo-nya - ma neng - we we-ma.

The cir - cle of life!

(ALL exit. #3 INTO SCAR'S CAVE.)