



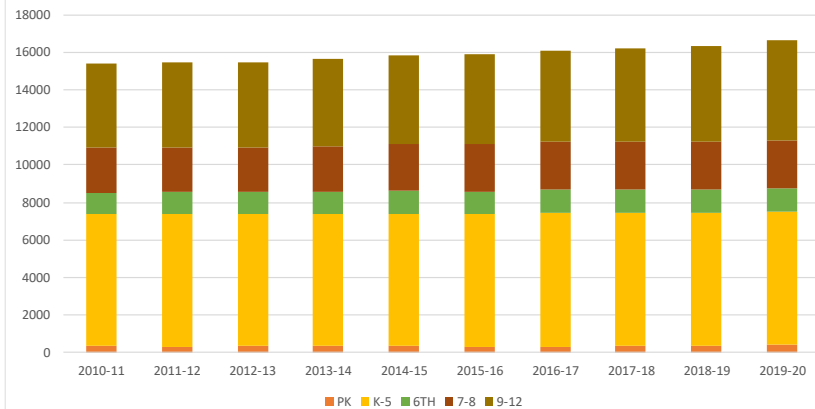
COOPERATIVE
STRATEGIES

COMPLETE FINANCIAL & DEMOGRAPHIC PLANNING FOR EDUCATION

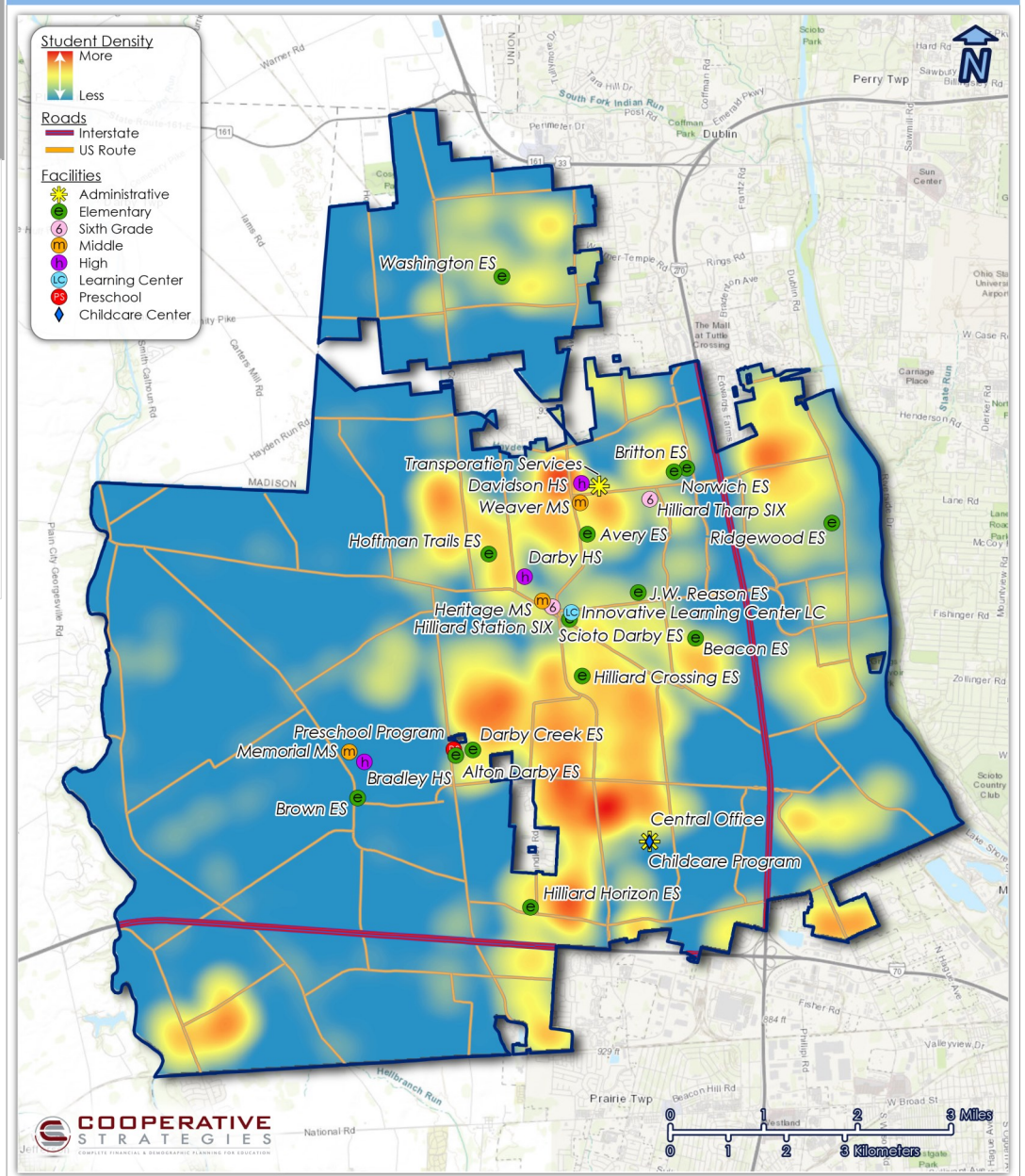
**Hilliard City Schools
District Snapshot &
Facility Data Sheets**

DISTRICTWIDE Historical Data

Hilliard City Schools Historic Enrollment by Grade Level



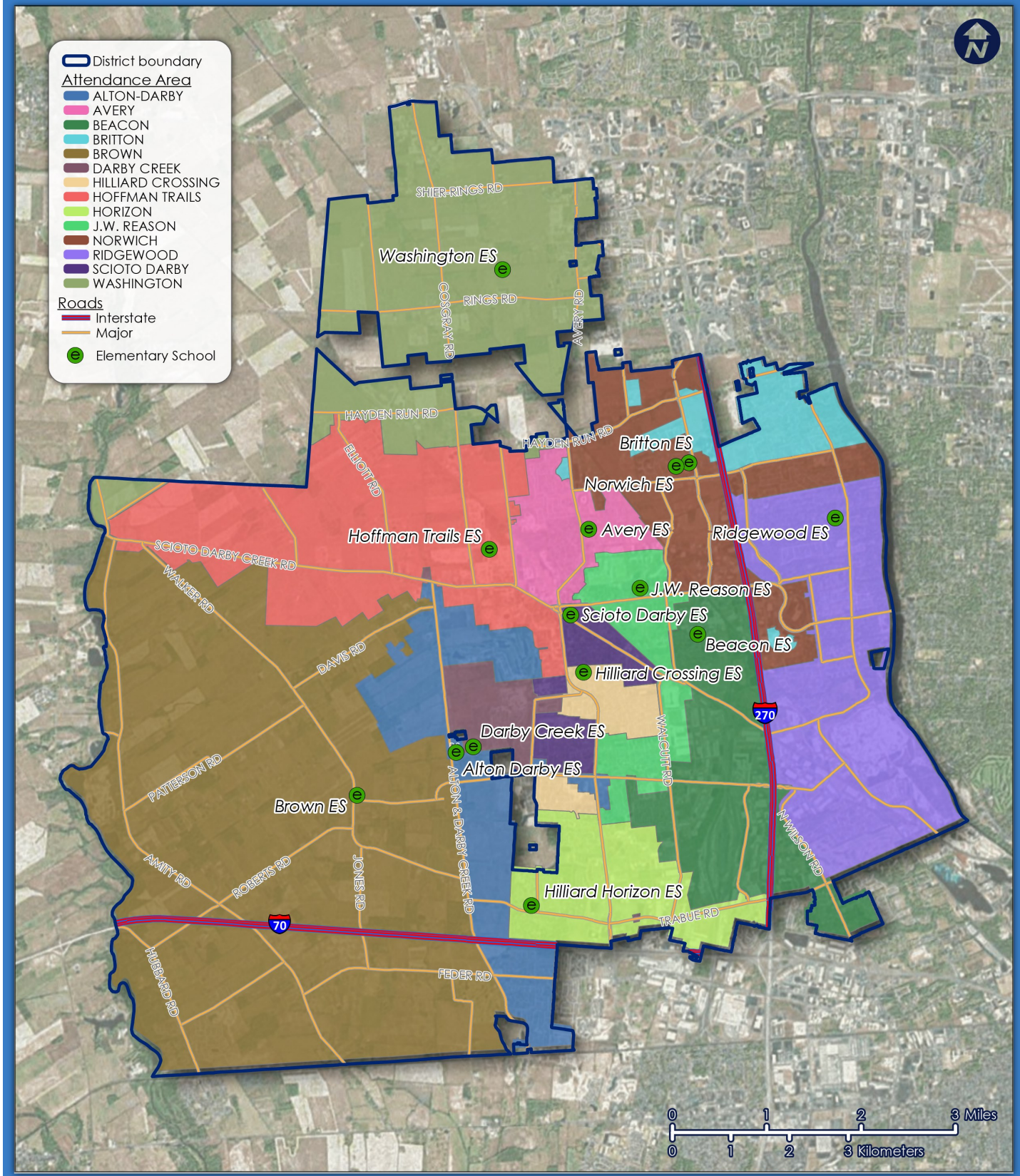
Student Density Grades K-12, 2018-19 School Year





HILLIARD CITY SCHOOLS

Elementary Attendance Boundaries, 2019-20 School Year



FACILITY CONDITION INDEX (FCI)

The FCI is an industry standard index used to track condition performance of facilities and capital/asset portfolios. The FCI provides a consistent measurement of condition for a single building, group of buildings, or total portfolio.

Standard metric to identify and quantify Risk

$$\text{FCI} = \frac{\text{Renewal and Repair Costs}}{\text{Replacement Cost}}$$



Name	Size (Sq.Ft.)	Asset Replacement Cost	2019	2020	2021	2022	2023	2024	2025	2026	2027	2028
Hilliard City School District Preschool	18,640	\$ 4,774,450	0.00%	0.20%	2.18%	2.18%	11.39%	11.39%	18.16%	27.95%	28.28%	28.28%
Alton Darby Elementary	60,247	\$ 14,238,174	0.00%	4.15%	6.14%	6.14%	10.29%	10.29%	18.18%	23.74%	24.08%	24.08%
Avery Elementary	45,176	\$ 11,571,381	7.84%	8.85%	12.74%	20.26%	22.93%	31.10%	36.40%	36.74%	36.74%	39.96%
Beacon Elementary	46,578	\$ 11,930,489	7.79%	9.29%	11.09%	14.65%	26.53%	30.94%	31.36%	35.40%	35.40%	35.59%
Britton Elementary	57,376	\$ 14,151,217	8.65%	9.49%	11.70%	19.20%	26.93%	30.49%	30.49%	30.49%	31.21%	31.21%
Brown Elementary	47,527	\$ 12,173,566	8.98%	9.80%	12.65%	19.31%	26.16%	27.51%	28.24%	28.24%	28.24%	28.24%
Darby Creek Elementary	58,500	\$ 14,428,440	0.32%	2.13%	3.94%	8.48%	19.08%	24.01%	24.51%	28.97%	31.93%	36.66%
Hilliard Crossing Elementary	59,600	\$ 14,699,744	5.64%	6.99%	8.78%	8.78%	20.82%	28.27%	28.69%	29.19%	32.54%	35.09%
Hilliard Horizon Elementary	58,500	\$ 14,428,440	1.53%	5.64%	13.67%	25.57%	26.92%	26.92%	26.92%	33.52%	34.94%	41.63%
Hoffman Trails Elementary	60,247	\$ 14,859,320	3.20%	4.02%	6.03%	6.03%	10.69%	10.69%	18.59%	30.27%	30.60%	30.60%
J.W. Reason Elementary	43,706	\$ 11,194,855	13.76%	14.83%	16.50%	20.95%	24.14%	27.57%	33.11%	37.14%	37.14%	37.14%
Norwich Elementary	59,600	\$ 14,699,744	5.87%	7.22%	13.35%	13.35%	20.87%	22.06%	22.06%	22.56%	32.59%	35.14%
Ridgewood Elementary	45,020	\$ 11,531,423	8.13%	8.69%	10.90%	11.96%	23.56%	27.14%	28.98%	31.85%	35.02%	35.02%
Scioto Darby Elementary	54,431	\$ 13,424,862	8.73%	9.57%	12.43%	19.93%	23.01%	28.93%	29.27%	29.27%	29.27%	29.27%
Washington Elementary	60,247	\$ 14,859,320	0.42%	0.42%	2.23%	2.23%	2.23%	2.23%	2.23%	2.25%	8.07%	8.24%



* one classroom from Alton Darby is being used for PS program and is not reflected in capacity number

[HCSD Preschool]

Current Enrollment	397
Projected Enrollment (2024)	XXXX
Capacity *	352
Utilization	112.78%
FCI	0.00%
Year Built	2001
Square Footage	18,640
Acreage	39.153 (Shared Acreage - HPS/ADE/DCR)

3 needs in the next 5 years	
Discipline	Type
Mechanicals	Heat Pumps
Building Sitework	Parking Lots
Electrical	Lighting Equipment (T-8 fixtures)

FCI: 2019 2020 2021 2022 2023 2024 2025 2026 2027 2028 2029



- one classroom from Alton Darby is being used for PS program and is reflected in the lower capacity number

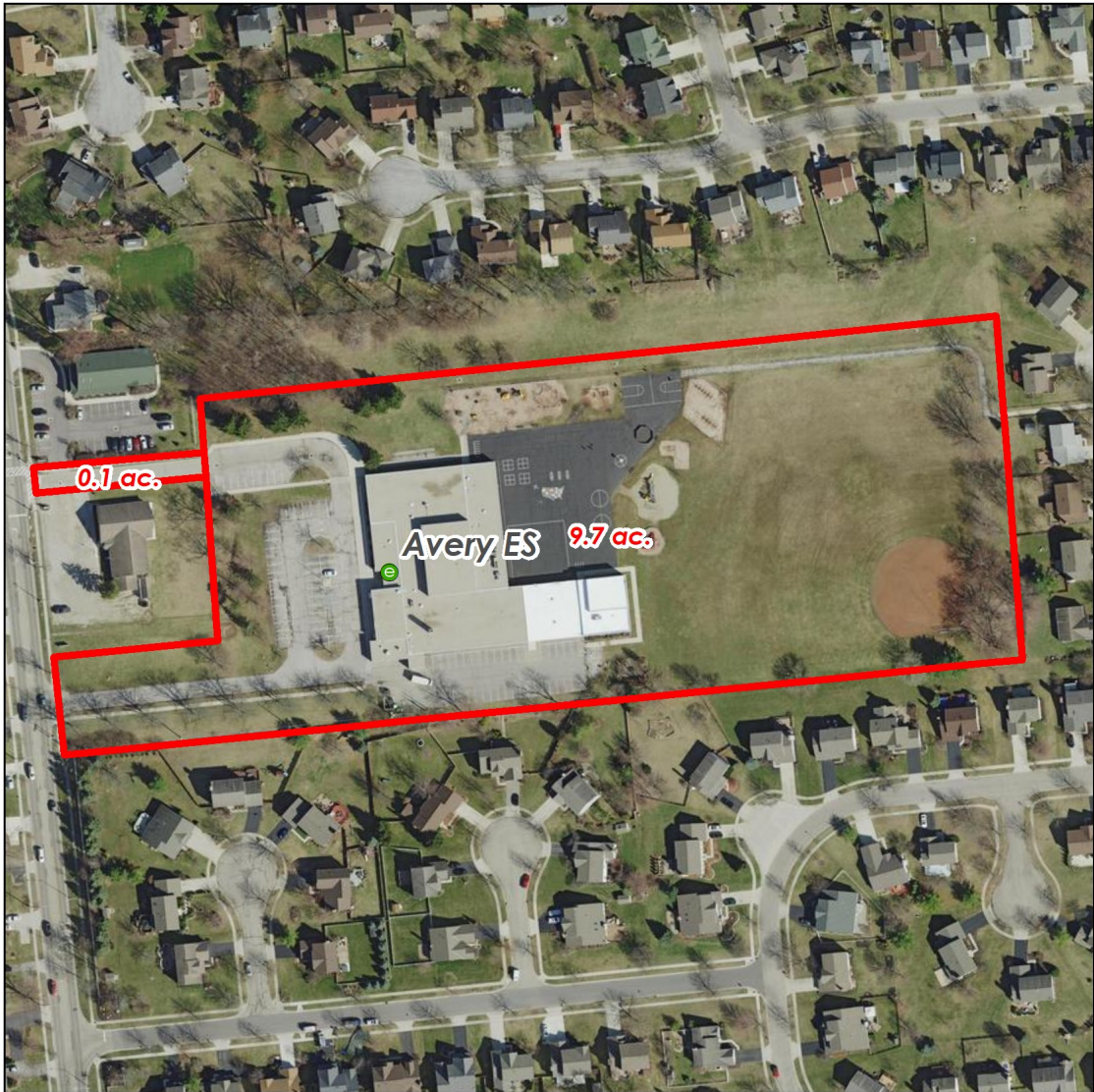
[Alton Darby ES]

Current Enrollment	574
Projected Enrollment (2024)	708
Capacity	585
Utilization	98.12%
FCI	0.00%
Year Built	2001
Square Footage	60,247
Acreage	39.153 (Shared Acreage - HPS/ADE/DCR)

3 needs in the next 5 years	
Discipline	Type
Mechanicals	Heat Pumps
Building Sitework	Parking Lots
Electrical	Lighting Equipment (T-8 fixtures)

FCI: 2019 2020 2021 2022 2023 2024 2025 2026 2027 2028 2029

NAME	Attend	Live In	Live & Attend	Transfer In	Transfer In %	Transfer Out	Transfer Out %
Alton Darby	574	636	509	65	11%	127	20%



Avery ES

Current Enrollment	415
Projected Enrollment (2024)	470
Capacity	522
Utilization	79.50%
FCI	7.84%
Year Built	1960
Square Footage	45,176
Acreage	9.896

3 needs in the next 5 years	
Discipline	Type
Mechanicals	Air Distribution System (AHU/Ducting)
Shell	Exterior Walls/Windows
Electrical	Service and Distribution/Lighting

FCI: 2019 2020 2021 2022 2023 2024 2025 2026 2027 2028 2029

NAME	Attend	Live In	Live & Attend	Transfer In	Transfer In %	Transfer Out	Transfer Out %
Avery	416	452	387	29	7%	65	14%



Beacon ES

Current Enrollment	484
Projected Enrollment (2024)	545
Capacity	558
Utilization	86.74%
FCI	7.79%
Year Built	1968
Square Footage	46,578
Acreage	10.154

3 needs in the next 5 years	
Discipline	Type
Mechanicals	Air Handling Units (AHU)
Shell	Exterior Windows/Doors
Electrical	Service and Distribution/Lighting

FCI: 2019 2020 2021 2022 2023 2024 2025 2026 2027 2028 2029

NAME	Attend	Live In	Live & Attend	Transfer In	Transfer In %	Transfer Out	Transfer Out %
Beacon	482	519	458	24	5%	61	12%



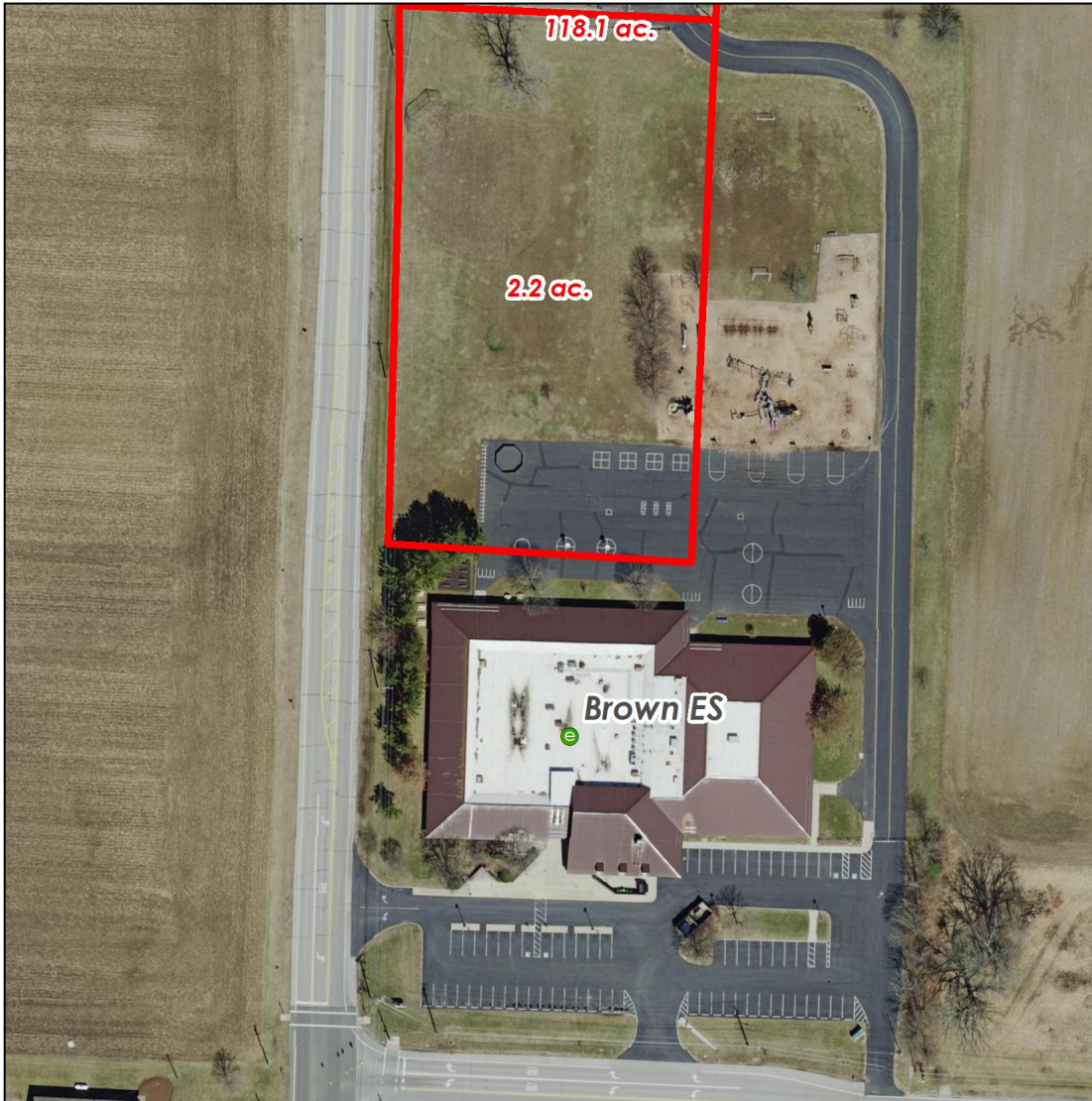
[Britton ES]

Current Enrollment	467
Projected Enrollment (2024)	510
Capacity	525
Utilization	88.95%
FCI	8.65%
Year Built	1968
Square Footage	57,376
Acreage	21.835 (Shared Acreage - BRT/NOR)

3 needs in the next 5 years	
Discipline	Type
Mechanicals	Air Handling Units (AHU)
Shell	Exterior Walls/Windows/Doors
Electrical	Lighting Equipment (T-8 fixtures)

FCI: 2019 2020 2021 2022 2023 2024 2025 2026 2027 2028 2029

NAME	Attend	Live In	Live & Attend	Transfer In	Transfer In %	Transfer Out	Transfer Out %
Britton	469	545	430	39	8%	115	21%



Brown ES	
Current Enrollment	475
Projected Enrollment (2024)	429
Capacity	605
Utilization	78.51%
FCI	8.98%
Year Built	1965
Square Footage	47,527
Acreage	7.272
3 needs in the next 5 years	
Discipline	Type
Mechanicals	Air Handling Units (AHU)
Shell	Exterior Walls/Windows/Doors
Electrical	Lighting Equipment (T-8 fixtures)

FCI: 2019 2020 2021 2022 2023 2024 2025 2026 2027 2028 2029

NAME	Attend	Live In	Live & Attend	Transfer In	Transfer In %	Transfer Out	Transfer Out %
Brown	476	505	405	71	15%	100	20%



[Darby Creek ES]

Current Enrollment	397
Projected Enrollment (2024)	403
Capacity	660
Utilization	60.15%
FCI	0.32%
Year Built	1998
Square Footage	58,500
Acreage	39.153 (Shared Acreage - HPS/ADE/DCR)

3 needs in the next 5 years	
Discipline	Type
Mechanicals	Heat Pumps
Electrical	Life Safety Systems
Electrical	Lighting Equipment (T-8 fixtures)

FCI: 2019 2020 2021 2022 2023 2024 2025 2026 2027 2028 2029

NAME	Attend	Live In	Live & Attend	Transfer In	Transfer In %	Transfer Out	Transfer Out %
Darby Creek	397	389	335	62	16%	54	14%



Hilliard Crossing ES

Current Enrollment	560
Projected Enrollment (2024)	653
Capacity	610
Utilization	91.80%
FCI	5.64%
Year Built	1993
Square Footage	59,600
Acreage	12

3 needs in the next 5 years

Discipline	Type
Shell	Roof
Mechanical	Heat Pumps
Electrical	PA and Communication System

FCI: 2019 2020 2021 2022 2023 2024 2025 2026 2027 2028 2029

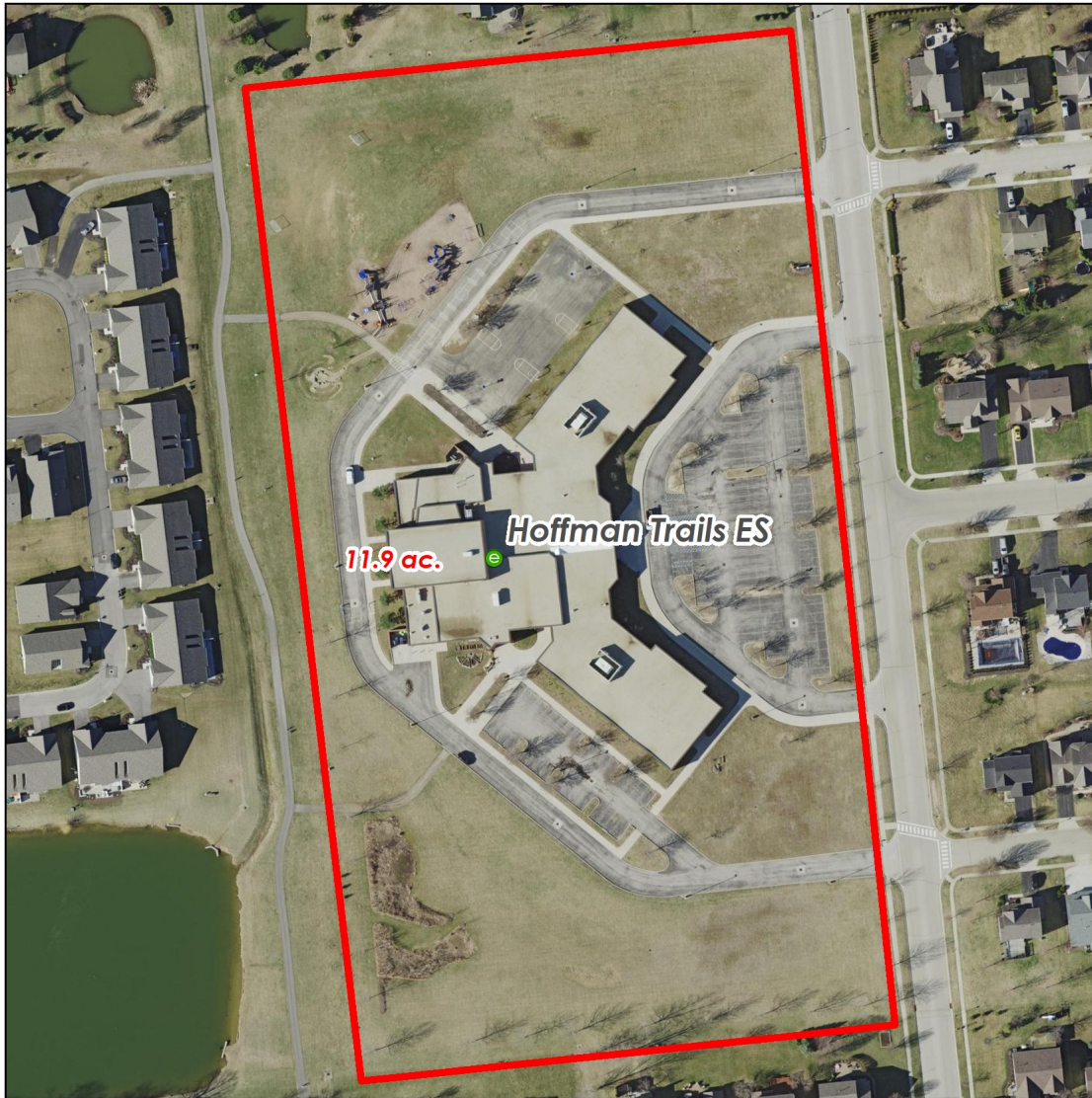
NAME	Attend	Live In	Live & Attend	Transfer In	Transfer In %	Transfer Out	Transfer Out %
Hilliard Crossing	562	600	518	44	8%	82	14%



Horizon ES	
Current Enrollment	613
Projected Enrollment (2024)	601
Capacity	629
Utilization	97.46%
FCI	1.53%
Year Built	1996
Square Footage	58,500
Acreage	9.595
3 needs in the next 5 years	
Discipline	Type
Shell	Roof
Mechanical	Heat Pumps
Electrical	Life Safety Systems

FCI: 2019 2020 2021 2022 2023 2024 2025 2026 2027 2028 2029

NAME	Attend	Live In	Live & Attend	Transfer In	Transfer In %	Transfer Out	Transfer Out %
Hilliard Horizon	613	698	587	26	4%	111	16%



[Hoffman Trails ES]

Current Enrollment	549
Projected Enrollment (2024)	462
Capacity	678
Utilization	80.97%
FCI	3.20%
Year Built	2001
Square Footage	60,247
Acreage	12.075

3 needs in the next 5 years	
Discipline	Type
Mechanicals	Rooftop Units
Building Sitework	Parking Lots
Electrical	Lighting Equipment (T-8 fixtures)

FCI: 2019 2020 2021 2022 2023 2024 2025 2026 2027 2028 2029

NAME	Attend	Live In	Live & Attend	Transfer In	Transfer In %	Transfer Out	Transfer Out %
Hoffman Trails	548	585	518	30	5%	67	11%



[J.W. Reason ES]

Current Enrollment	511
Projected Enrollment (2024)	539
Capacity	579
Utilization	88.26%
FCI	13.76%
Year Built	1958
Square Footage	43,706
Acreage	13.44

3 needs in the next 5 years	
Discipline	Type
Mechanicals	Plumbing/Air Handling Units
Shell	Roof
Interiors	VCT Floors

FCI: 2019 2020 2021 2022 2023 2024 2025 2026 2027 2028 2029

NAME	Attend	Live In	Live & Attend	Transfer In	Transfer In %	Transfer Out	Transfer Out %
J. W. Reason	505	529	463	42	8%	66	12%



Norwich ES

Current Enrollment	521
Projected Enrollment (2024)	527
Capacity	603
Utilization	86.40%
FCI	5.87%
Year Built	1993
Square Footage	59,600
Acreage	21.835 (Shared Acreage - BRT/NOR)

3 needs in the next 5 years	
Discipline	Type
Mechanicals	Hot Water Boilers/Heat Pumps
Shell	Roof
Electrical	Life Safety Systems

FCI: 2019 2020 2021 2022 2023 2024 2025 2026 2027 2028 2029

NAME	Attend	Live In	Live & Attend	Transfer In	Transfer In %	Transfer Out	Transfer Out %
Norwich	524	465	409	115	22%	56	12%



[Ridgewood ES]	
Current Enrollment	564
Projected Enrollment (2024)	610
Capacity	596
Utilization	94.63%
FCI	8.13%
Year Built	1961
Square Footage	45,020
Acreage	10.041
3 needs in the next 5 years	
Discipline	Type
Mechanicals	Air Handling Units
Interiors	Wall/Floor finishes
Electrical	Lighting Equipment (T-8 fixtures)

FCI: 2019 2020 2021 2022 2023 2024 2025 2026 2027 2028 2029

NAME	Attend	Live In	Live & Attend	Transfer In	Transfer In %	Transfer Out	Transfer Out %
Ridgewood	566	652	551	15	3%	101	15%



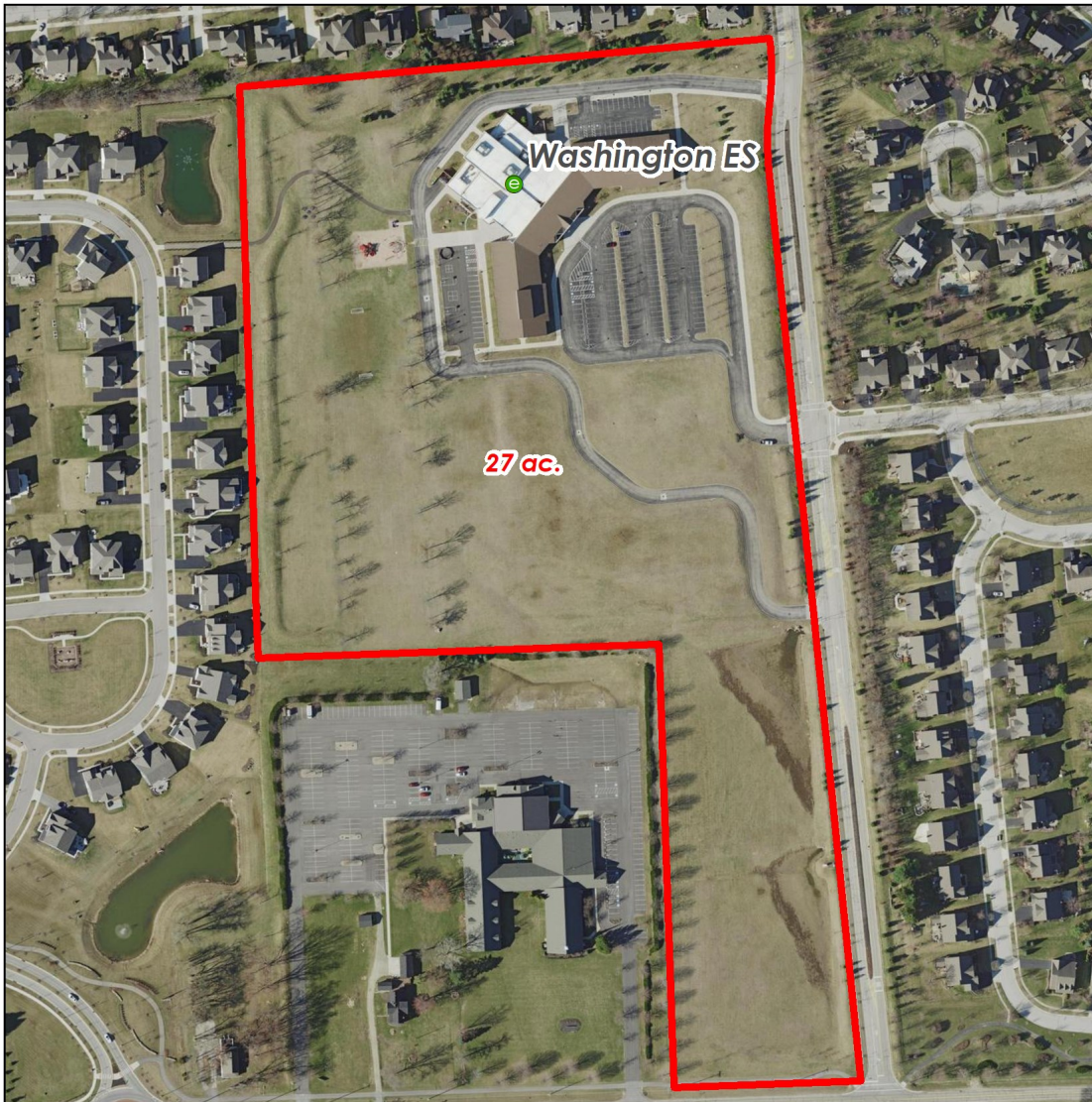
Scioto Darby ES

Current Enrollment	427
Projected Enrollment (2024)	444
Capacity	535
Utilization	79.81%
FCI	8.73%
Year Built	1963
Square Footage	53,431
Acreage	14.9296 (Shared Acreage - SDE/ILC)

3 needs in the next 5 years	
Discipline	Type
Mechanicals	Air Handling Units/Unit Ventilators
Shell	Exterior Walls/Windows/Doors
Electrical	Service and Distribution/Lighting

FCI: 2019 2020 2021 2022 2023 2024 2025 2026 2027 2028 2029

NAME	Attend	Live In	Live & Attend	Transfer In	Transfer In %	Transfer Out	Transfer Out %
Scioto Darby	427	475	392	35	8%	83	17%



Washington ES	
Current Enrollment	407
Projected Enrollment (2024)	446
Capacity	642
Utilization	63.40%
FCI	0.42%
Year Built	2007
Square Footage	60,247
Acreage	26.99
3 needs in the next 5 years	
Discipline	Type
Mechanicals	Domestic Water Heater
Electrical	Lighting Equipment (T-8 fixtures)
Electrical	Exit/Emergency Lighting

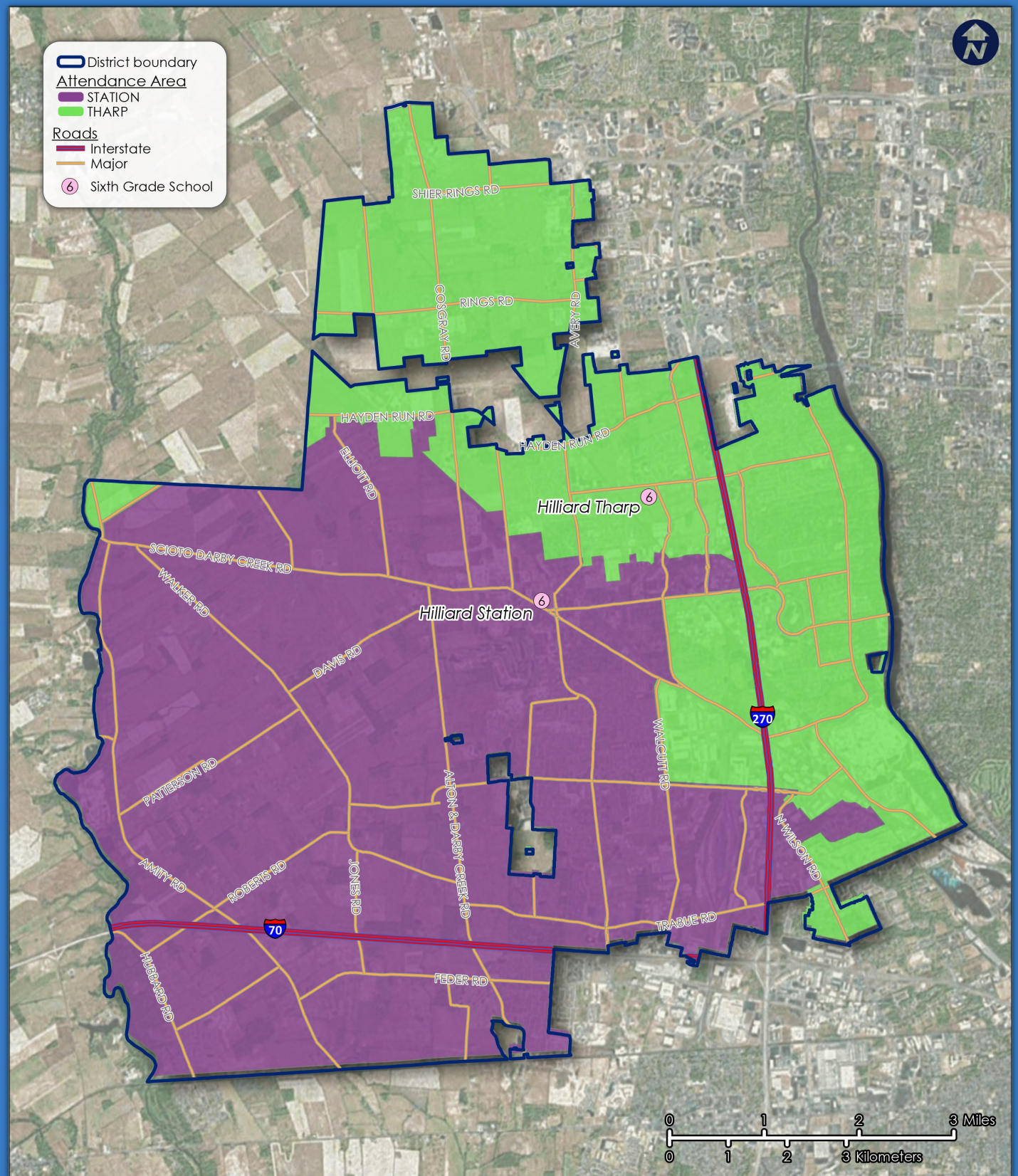
FCI: 2019 2020 2021 2022 2023 2024 2025 2026 2027 2028 2029

NAME	Attend	Live In	Live & Attend	Transfer In	Transfer In %	Transfer Out	Transfer Out %
Washington	406	419	372	34	8%	47	11%



HILLIARD CITY SCHOOLS

6th Grade Attendance Boundaries, 2019-20 School Year



FACILITY CONDITION INDEX (FCI)

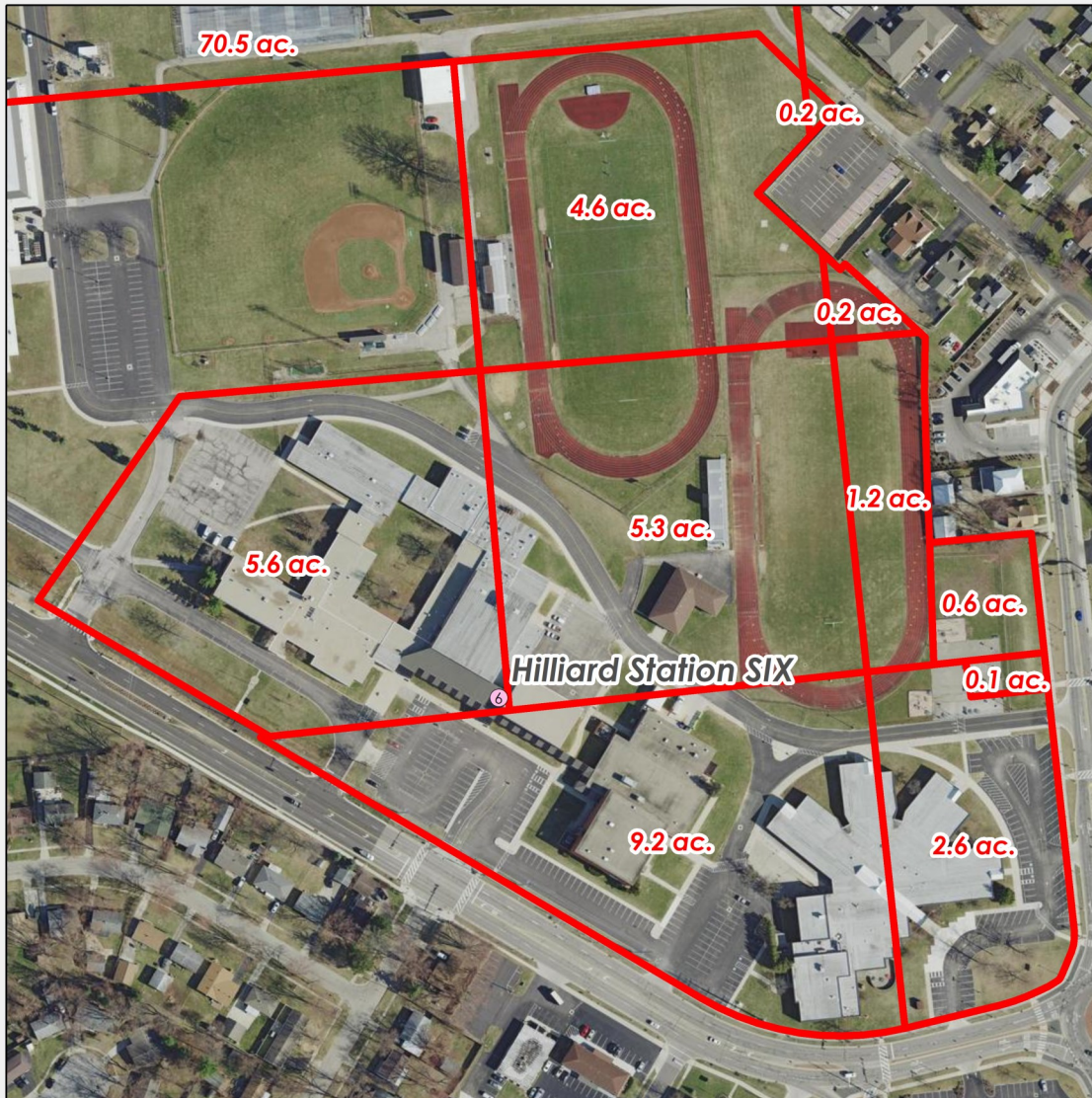
The FCI is an industry standard index used to track condition performance of facilities and capital/asset portfolios. The FCI provides a consistent measurement of condition for a single building, group of buildings, or total portfolio.

Standard metric to identify and quantify Risk

$$\text{FCI} = \frac{\text{Renewal and Repair Costs}}{\text{Replacement Cost}}$$



Name	Size (Sq.Ft.)	Asset Replacement Cost	2019	2020	2021	2022	2023	2024	2025	2026	2027	2028
Hilliard Station Sixth Grade School	126,703	\$ 29,767,603	4.72%	6.02%	8.21%	18.09%	22.43%	27.88%	27.88%	29.13%	29.13%	32.78%
Hilliard Tharp Sixth Grade School	78,898	\$ 18,645,964	3.22%	3.43%	4.59%	4.59%	7.87%	7.87%	17.15%	27.83%	35.59%	36.26%



[Station 6th Grade]

Current Enrollment	795
Projected Enrollment (2024)	726
Capacity	969
Utilization	82.04%
FCI	4.72%
Year Built	1956
Square Footage	126,703
Acreage	142.8095 (Shared Acreage - Hub/HMS/HST/ HDB)

3 needs in the next 5 years	
Discipline	Type
Mechanicals	Plumbing
Shell	Roof Section
Electrical	Lighting Equipment (T-8 fixtures)

FCI: 2019 2020 2021 2022 2023 2024 2025 2026 2027 2028 2029

NAME	Attend	Live In	Live & Attend	Transfer In	Transfer In %	Transfer Out	Transfer Out %
Station Sixth Grade	796	802	793	3	0%	9	1%



Tharp 6th Grade	
Current Enrollment	555
Projected Enrollment (2024)	607
Capacity	829
Utilization	66.95%
FCI	3.22%
Year Built	2001
Square Footage	78,898
Acreage	15.241
3 needs in the next 5 years	
Discipline	Type
Mechanicals	Rooftop Units/Heat Pumps
Building Sitework	Parking Lots
Electrical	Lighting Equipment (T-8 fixtures)

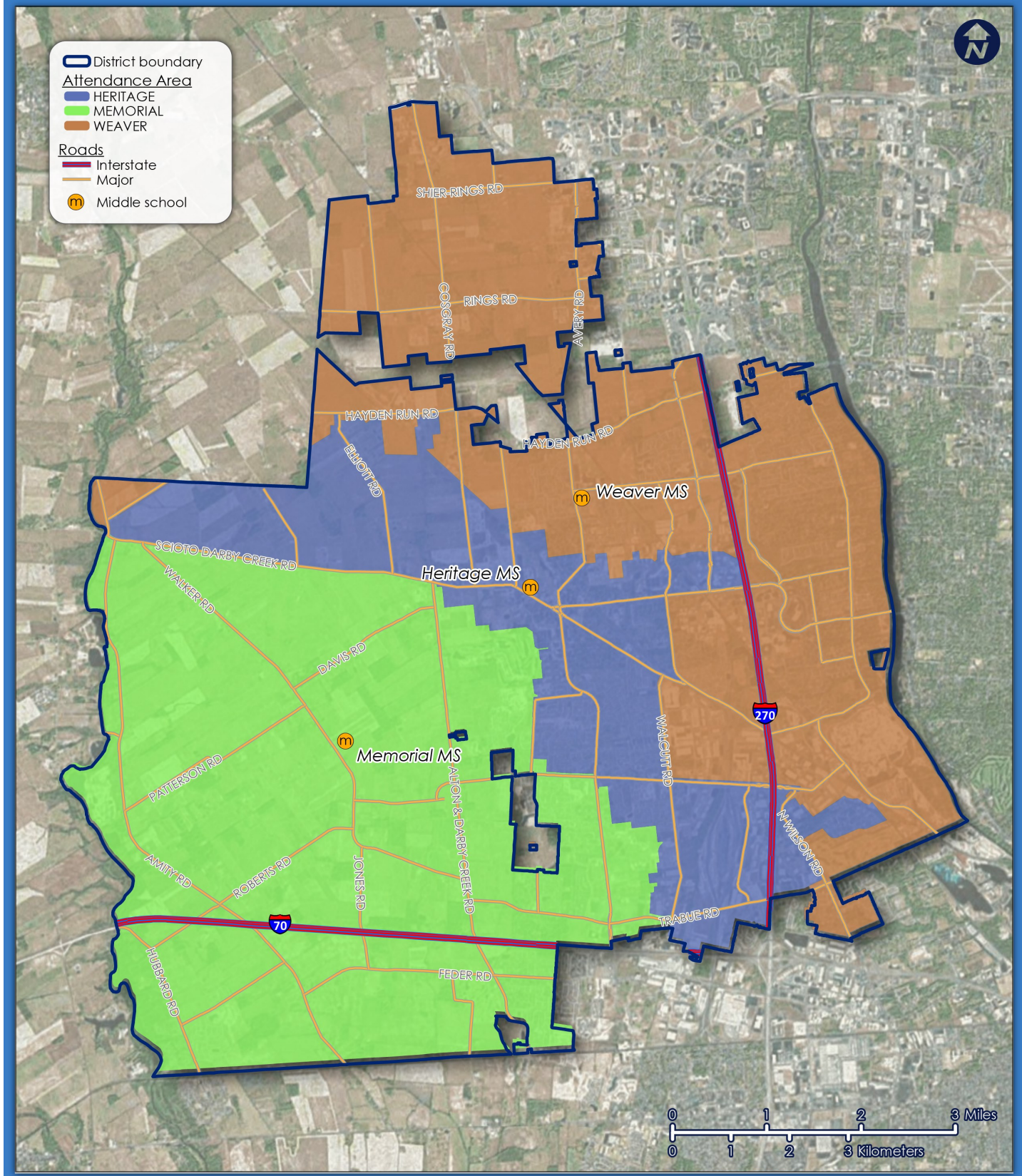
FCI: 2019 2020 2021 2022 2023 2024 2025 2026 2027 2028 2029

NAME	Attend	Live In	Live & Attend	Transfer In	Transfer In %	Transfer Out	Transfer Out %
Tharp Sixth Grade	447	451	446	1	0%	5	1%



HILLIARD CITY SCHOOLS

Middle School Attendance Boundaries, 2019-20 School Year



FACILITY CONDITION INDEX (FCI)

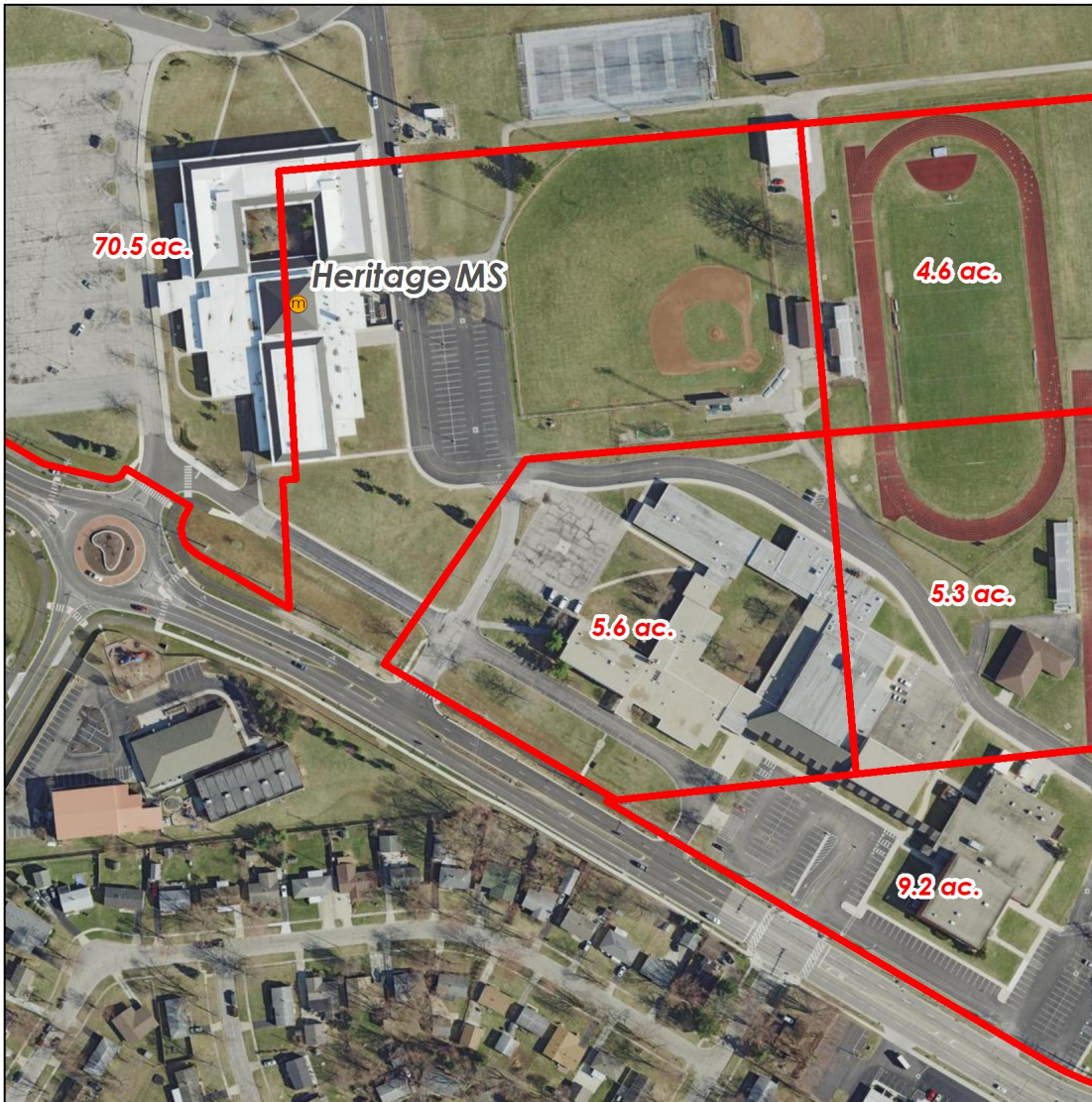
The FCI is an industry standard index used to track condition performance of facilities and capital/asset portfolios. The FCI provides a consistent measurement of condition for a single building, group of buildings, or total portfolio.

Standard metric to identify and quantify Risk

$$\text{FCI} = \frac{\text{Renewal and Repair Costs}}{\text{Replacement Cost}}$$



Name	Size (Sq.Ft.)	Asset Replacement Cost	2019	2020	2021	2022	2023	2024	2025	2026	2027	2028
Hilliard Heritage Middle School	117,600	\$ 27,628,944	5.39%	16.54%	21.96%	27.67%	28.87%	34.80%	34.80%	39.89%	44.82%	44.82%
Hilliard Memorial Middle School	139,985	\$ 33,992,061	0.00%	0.00%	0.00%	0.00%	0.00%	0.00%	0.00%	0.00%	0.00%	0.45%
Hilliard Weaver Middle School	122,088	\$ 28,683,355	7.15%	8.05%	10.52%	10.52%	10.52%	19.57%	19.57%	19.57%	26.48%	28.08%



Heritage MS

Current Enrollment	783
Projected Enrollment (2024)	768
Capacity	1045
Utilization	74.93%
FCI	5.39%
Year Built	1996
Square Footage	117,600
Acreage	142.8095 (Shared Acreage - Hub/HMS/HST/HDB)

3 needs in the next 5 years	
Discipline	Type
Mechanicals	Air Handling Units
Building Sitework	Parking Lots
Electrical	Lighting Equipment (T-8 fixtures)

FCI: 2019 2020 2021 2022 2023 2024 2025 2026 2027 2028 2029

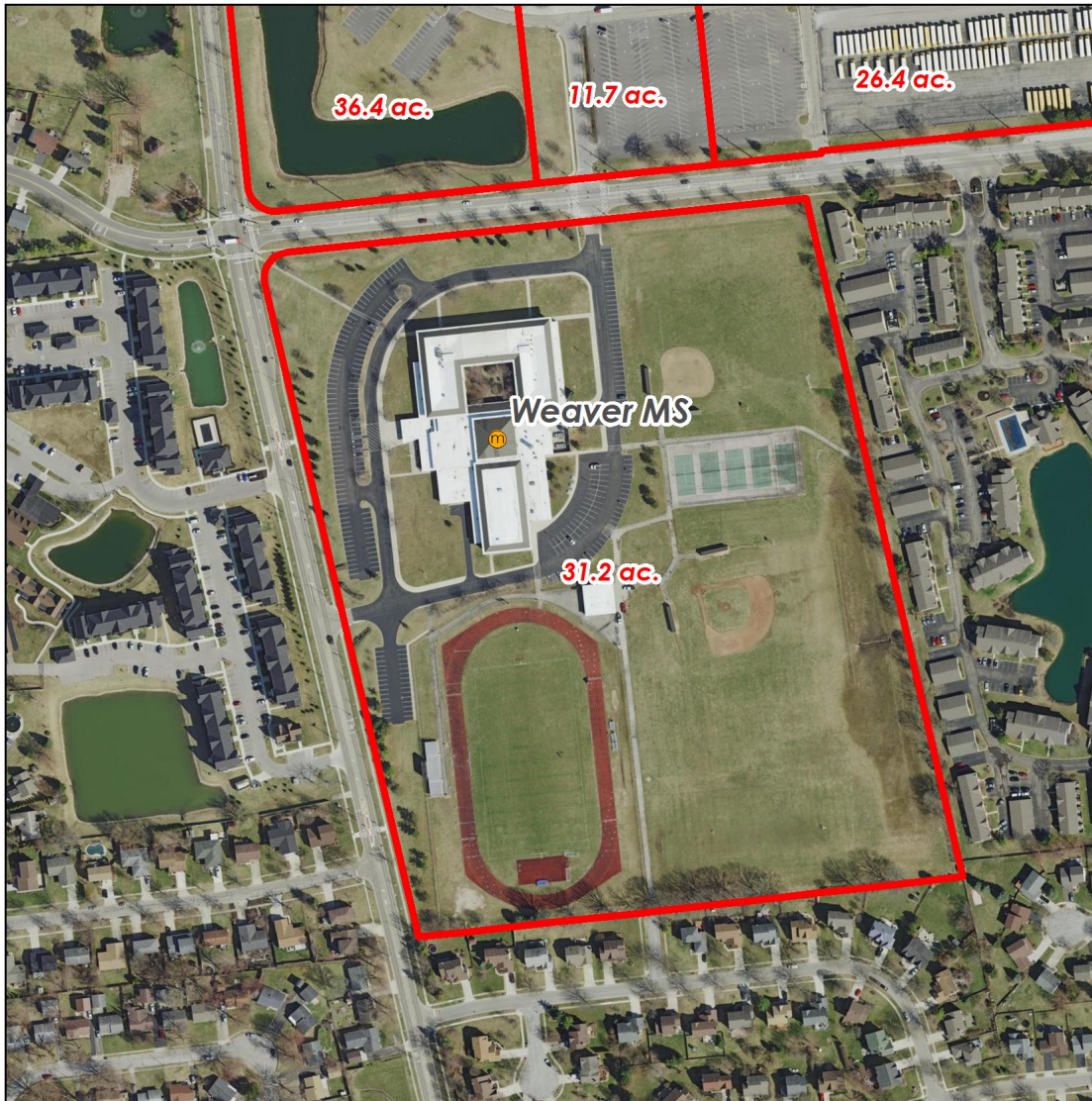
NAME	Attend	Live In	Live & Attend	Transfer In	Transfer In %	Transfer Out	Transfer Out %
Heritage	781	782	769	12	2%	13	2%



[Memorial MS]	
Current Enrollment	859
Projected Enrollment (2024)	821
Capacity	1,187
Utilization	72.37%
FCI	0.00%
Year Built	2018
Square Footage	139,985
Acreage	119.525 (Shared Acreage - MMS/BRD)
No Needs - New Construction	

FCI: 2019 2020 2021 2022 2023 2024 2025 2026 2027 2028 2029

NAME	Attend	Live In	Live & Attend	Transfer In	Transfer In %	Transfer Out	Transfer Out %
Memorial	853	852	843	10	1%	9	1%



Weaver MS

Current Enrollment	934
Projected Enrollment (2024)	1007
Capacity	1,045
Utilization	89.38%
FCI	7.15%
Year Built	1994
Square Footage	122,088
Acreage	31.29

3 needs in the next 5 years	
Discipline	Type
Mechanicals	Air Handling Units
Interiors	Fittings
Electrical	Lighting Equipment (T-8 fixtures)

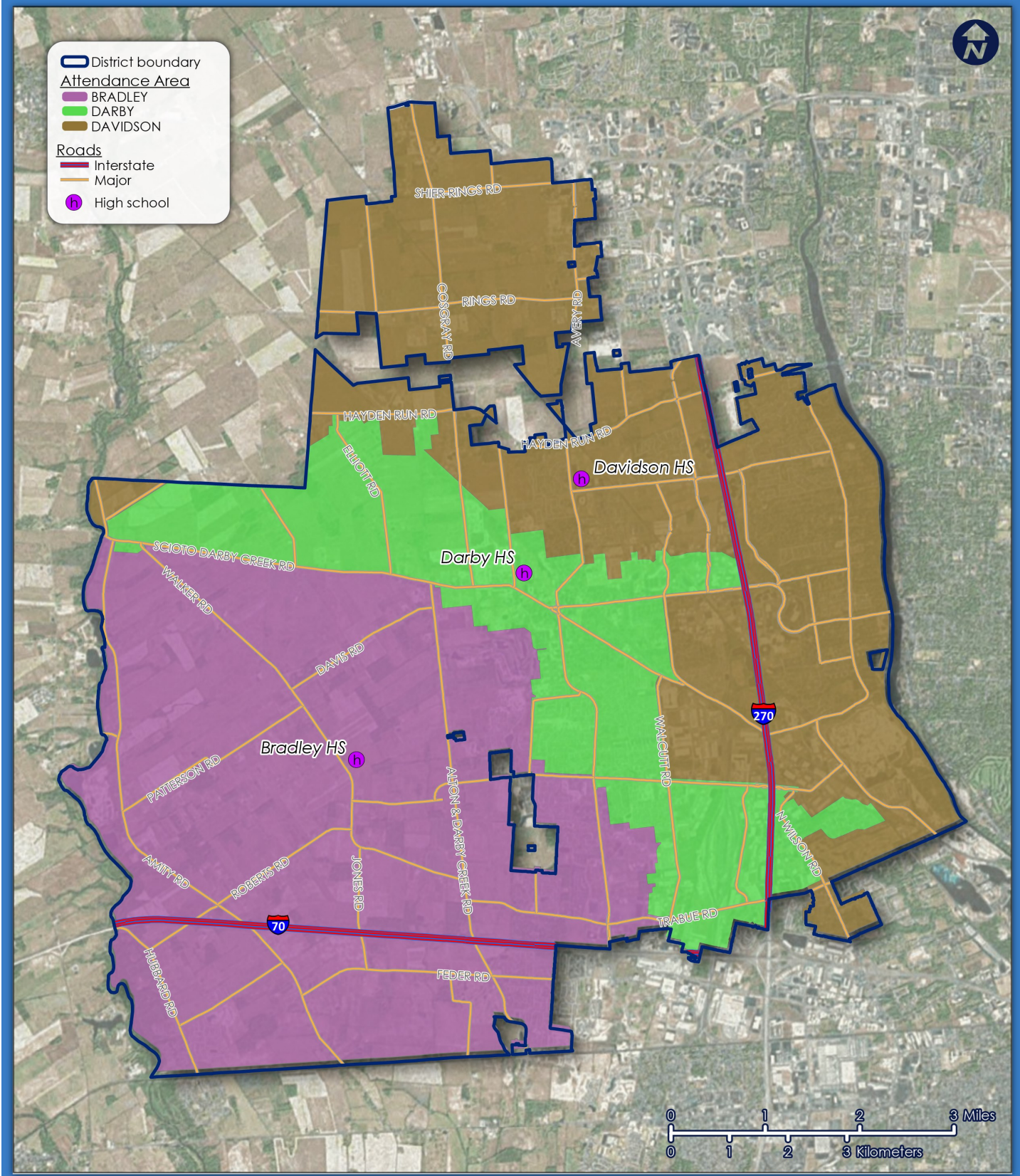
FCI: 2019 2020 2021 2022 2023 2024 2025 2026 2027 2028 2029

NAME	Attend	Live In	Live & Attend	Transfer In	Transfer In %	Transfer Out	Transfer Out %
Weaver	931	929	922	9	1%	7	1%



HILLIARD CITY SCHOOLS

High School Attendance Boundaries, 2019-20 School Year



FACILITY CONDITION INDEX (FCI)

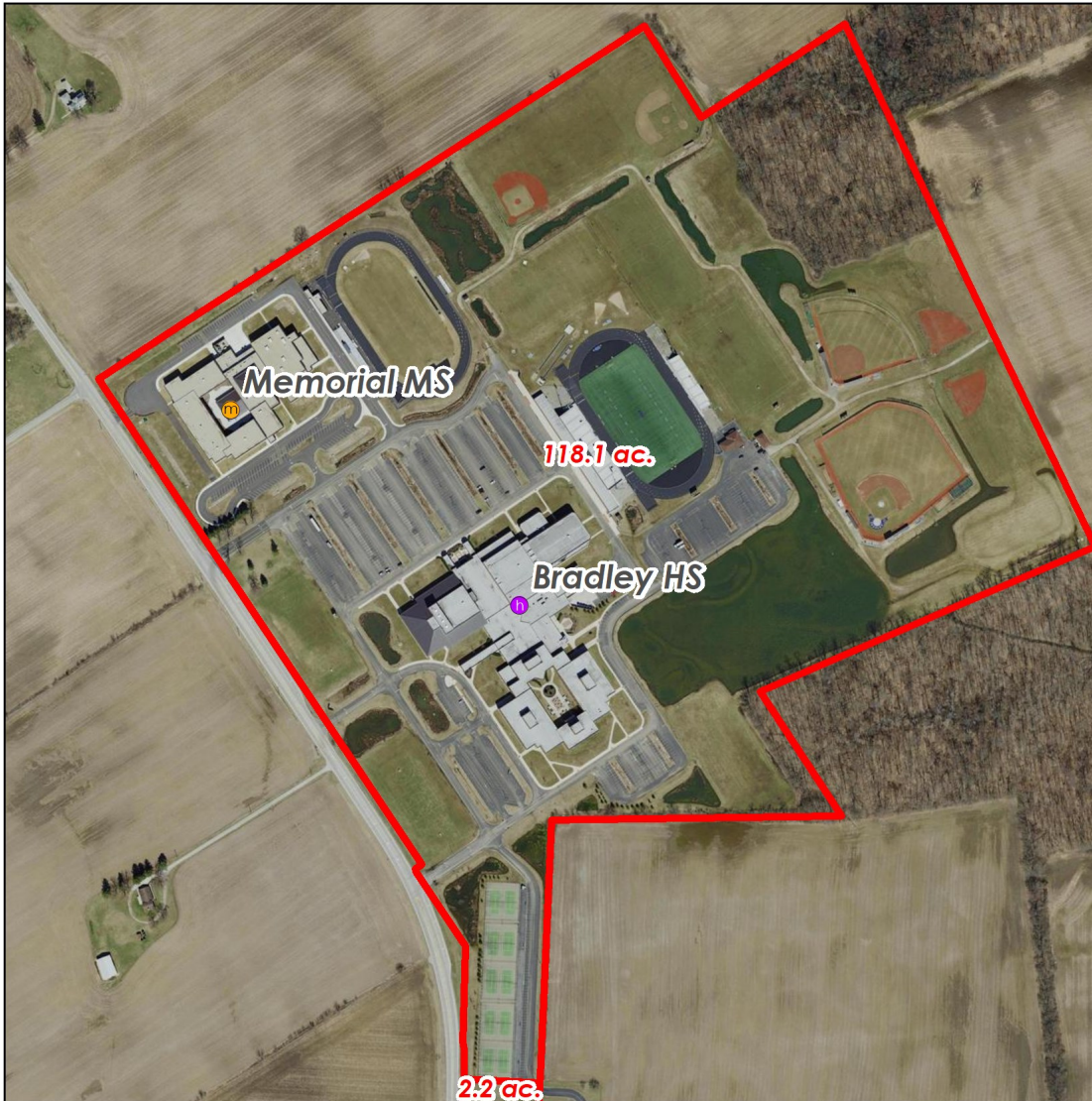
The FCI is an industry standard index used to track condition performance of facilities and capital/asset portfolios. The FCI provides a consistent measurement of condition for a single building, group of buildings, or total portfolio.

Standard metric to identify and quantify Risk

$$\text{FCI} = \frac{\text{Renewal and Repair Costs}}{\text{Replacement Cost}}$$



Name	Size (Sq.Ft.)	Asset Replacement Cost	2019	2020	2021	2022	2023	2024	2025	2026	2027	2028
Hilliard Bradley High School	309,163	\$ 73,574,611	0.00%	0.80%	2.69%	2.69%	2.69%	2.96%	2.96%	2.96%	2.96%	2.96%
Hilliard Darby High School	233,700	\$ 55,615,926	2.00%	2.00%	4.67%	19.31%	22.08%	23.17%	24.21%	25.19%	33.22%	33.22%
Hilliard Davidson High School	229,977	\$ 54,729,926	6.43%	6.81%	16.85%	16.85%	20.01%	26.99%	31.85%	34.75%	35.74%	35.74%



Bradley HS

Current Enrollment	1,752
Projected Enrollment (2024)	1754
Capacity	2,075
Utilization	84.43%
FCI	0.00%
Year Built	2009
Square Footage	322,438
Acreage	119.525 (Shared Acreage - MMS/BRD)

3 needs in the next 5 years	
Discipline	Type
Mechanicals	Air Handling Units/Plumbing
Electrical	Life Safety Systems
Electrical	Lighting Equipment (T-8 fixtures)

FCI: 2019 2020 2021 2022 2023 2024 2025 2026 2027 2028 2029

NAME	Attend	Live In	Live & Attend	Transfer In	Transfer In %	Transfer Out	Transfer Out %
Bradley	1,744	1,759	1,716	28	2%	43	2%



[Darby HS]

Current Enrollment	1,715
Projected Enrollment (2024)	1728
Capacity	1,864
Utilization	92.01%
FCI	2.00%
Year Built	1997
Square Footage	247,200
Acreage	142.8095 (Shared Acreage - Hub/HMS/HST/HDB)

3 needs in the next 5 years	
Discipline	Type
Mechanicals	Chillers/Boilers/Pumps
Building Sitework	Parking Lot section
Electrical	Lighting Equipment (T-8 fixtures)

FCI: 2019 2020 2021 2022 2023 2024 2025 2026 2027 2028 2029

NAME	Attend	Live In	Live & Attend	Transfer In	Transfer In %	Transfer Out	Transfer Out %
Darby	1,694	1,670	1,632	62	4%	38	2%



Davidson HS

Current Enrollment	1,932
Projected Enrollment (2024)	2052
Capacity	1,864
Utilization	103.65%
FCI	6.43%
Year Built	1989
Square Footage	240,378
Acreage	65.796

3 needs in the next 5 years	
Discipline	Type
Mechanicals	Air Handling Units/Plumbing
Electrical	Life Safety Systems
Electrical	Electrical Service/Lighting

FCI: 2019 2020 2021 2022 2023 2024 2025 2026 2027 2028 2029

NAME	Attend	Live In	Live & Attend	Transfer In	Transfer In %	Transfer Out	Transfer Out %
Davidson	1,921	1,916	1,892	29	2%	24	1%