



COOPERATIVE
STRATEGIES

COMPLETE FINANCIAL & DEMOGRAPHIC PLANNING FOR EDUCATION

Hilliard City Schools Master Facilities Plan Educational Framework

November 13, 2019



► Purpose

Educational Framework

- **Purpose** | To gather feedback regarding principle planning elements of the Master Facilities Plan.
 - Elements such as school size, future programming, adequacy and condition of a facility, and choices of replacement versus renovation, will help guide the District when considering long term educational goals and serve as a framework in making facility planning decisions.



► MASTER FACILITIES PLAN

WHAT IS IT?

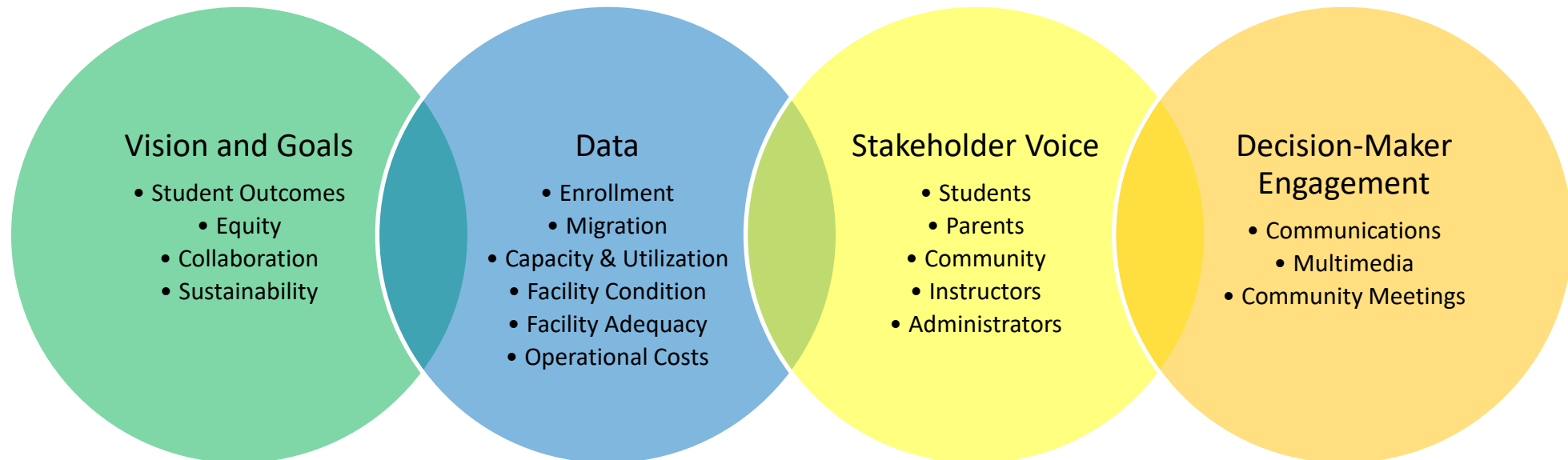
- Master Facility Plan is a result of a **transparent, data-driven process** that informs important decisions over the next 5-10 years
 - The result of a transparent, data-driven process that informs important decisions for the next 5-10 years on:
 - Educational programs
 - Facility use
 - Capital investment
- It addresses many key questions:
 - **What kind of schools** will best prepare students for the future, and **what kind of facilities** will help adults inspire them to achieve their full potential?
 - **How many students** will attend our schools in five years? Ten years?
 - **What is the right number, sizes, and locations of schools** to best serve these students?
 - Where do we need **new schools**? Which current buildings should be **replaced**? **expanded**? **modernized**? **repurposed**?
 - What is the **cost** and **schedule** to make these changes?



► MASTER FACILITIES PLAN

GOALS

- **Modern, flexible facilities** that enable collaborative learning and positive student outcomes.
- **Equitably allocated resources** informed by data, local priorities, and student voice.
- **Sustainable funding** for school facilities and programs.
- **Coordinated implementation of projects** with transparency and accountability.





► Possible MFP Outcomes

An executable plan for major capital investments in school

New construction

Major & moderate
renovations

Grade
configuration
changes

New magnet or
choice program
location expansion

Major furniture,
fixtures &
equipment
procurement (FFE)

Boundary changes

Facility
replacement

Feeder pattern
realignment

School
consolidations

Repurposed
facilities

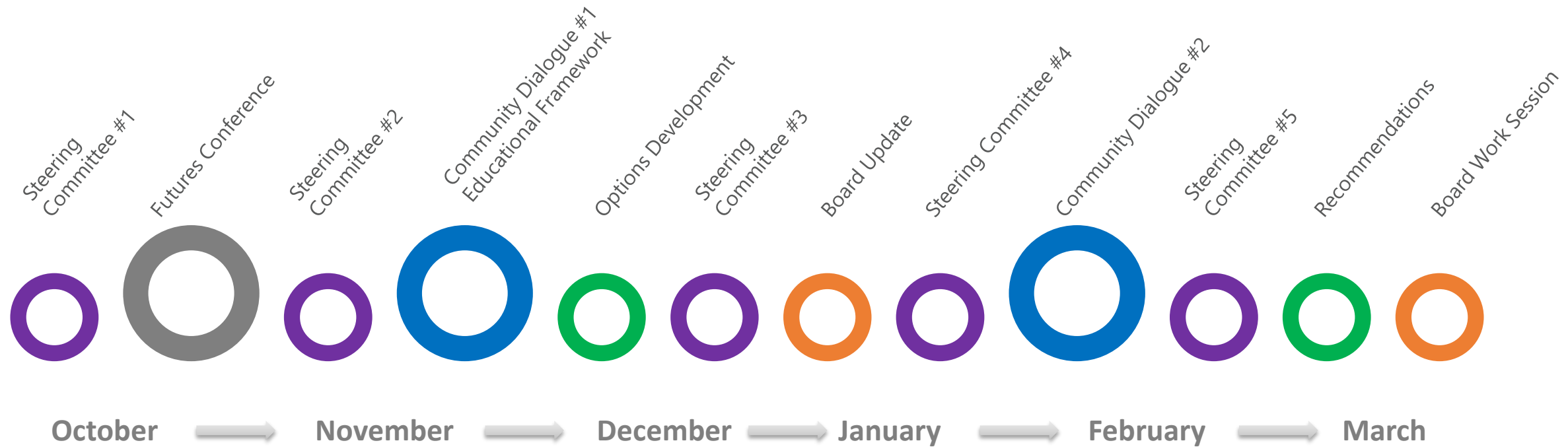


► The MFP process & timeline

October 2019 - March 2020

Collect & analyze data, vision, community feedback on planning priorities, & draft options (2019)

Refine options through community engagement & make FMP recommendations (Jan-May 2020)

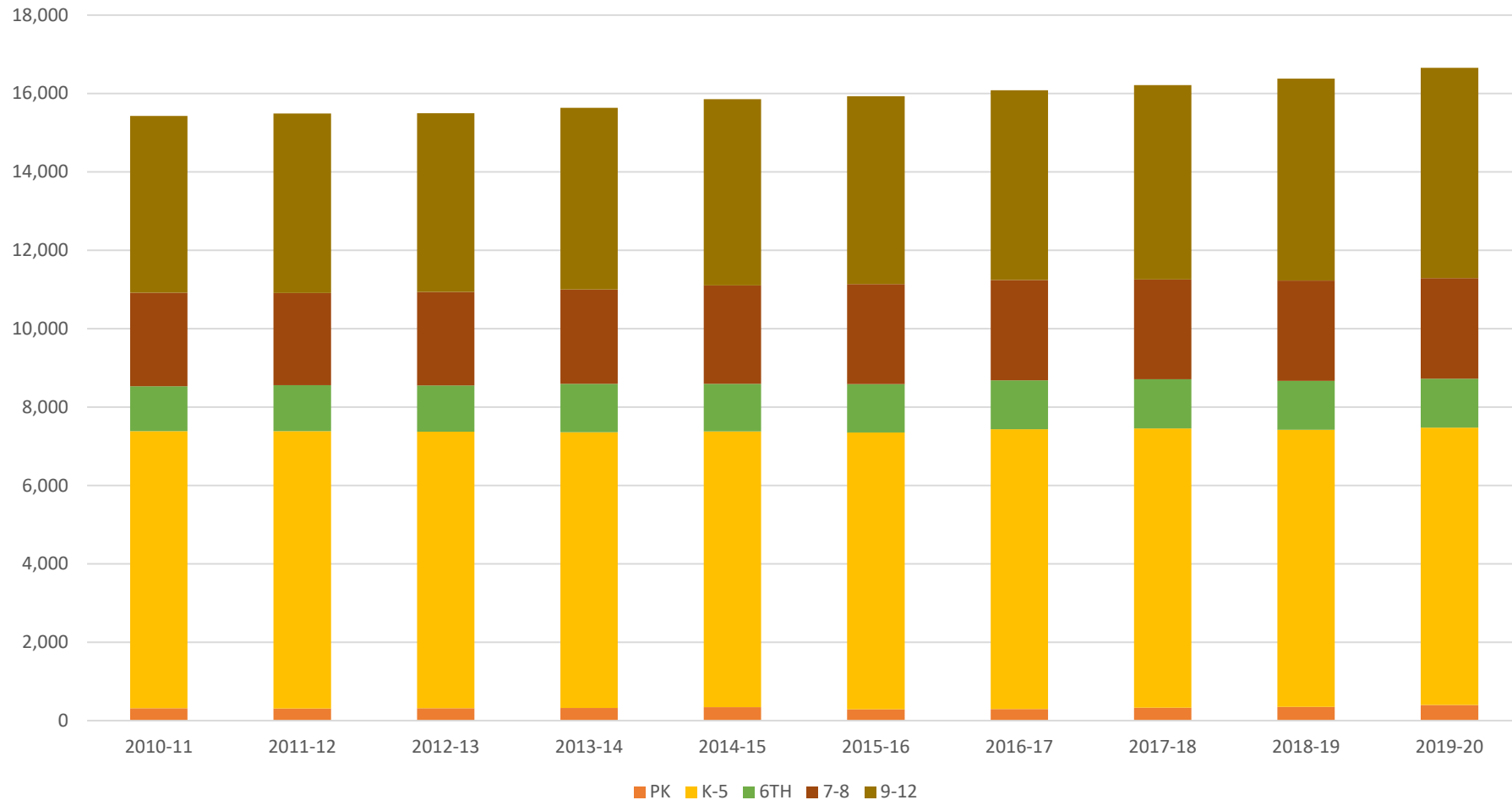




► DEMOGRAPHICS

ENROLLMENT

Hilliard City Schools Historic Enrollment by Grade Level

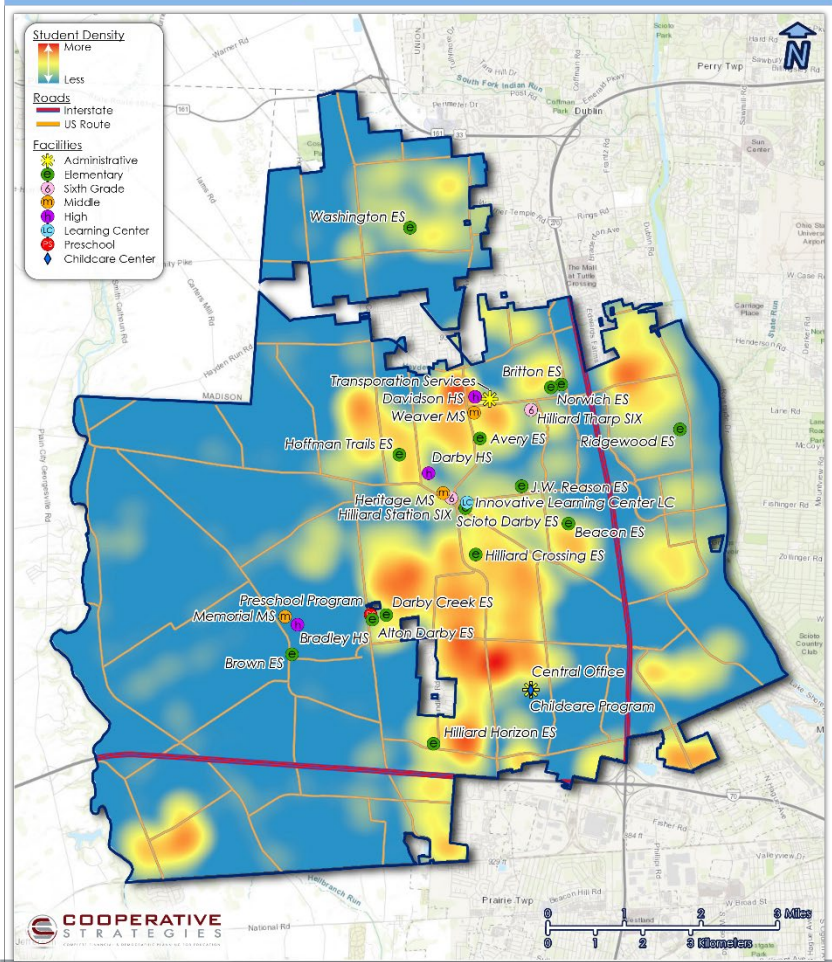




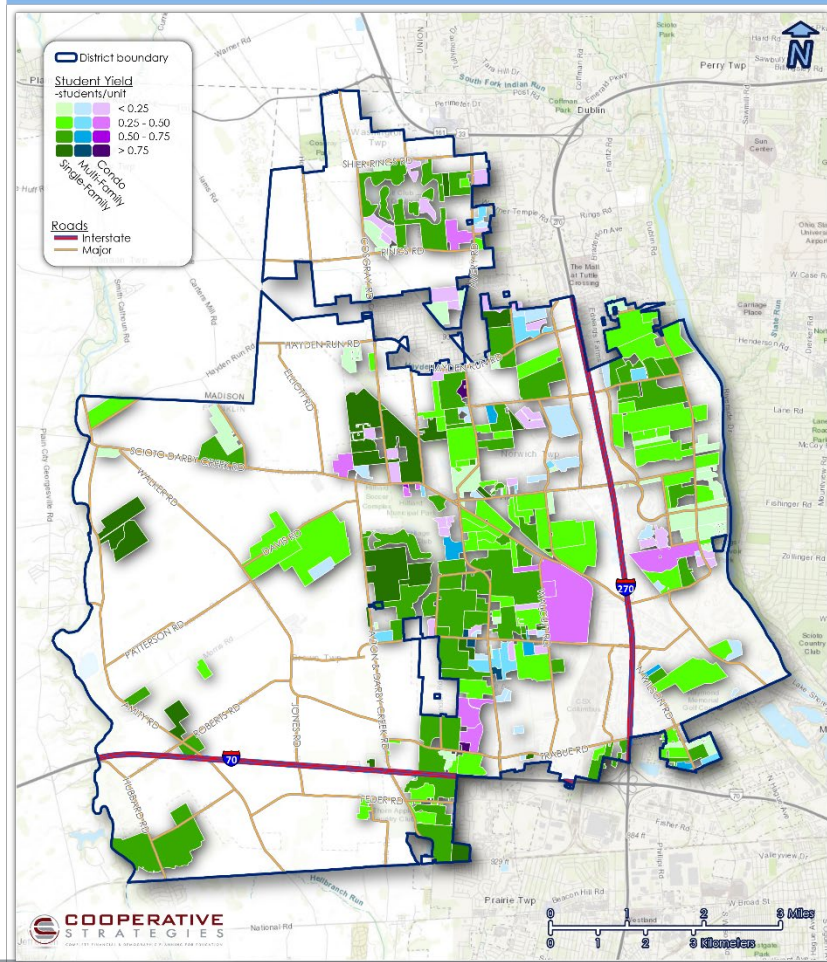
► DEMOGRAPHICS

STUDENT DENSITY & HOUSING DEVELOPMENT

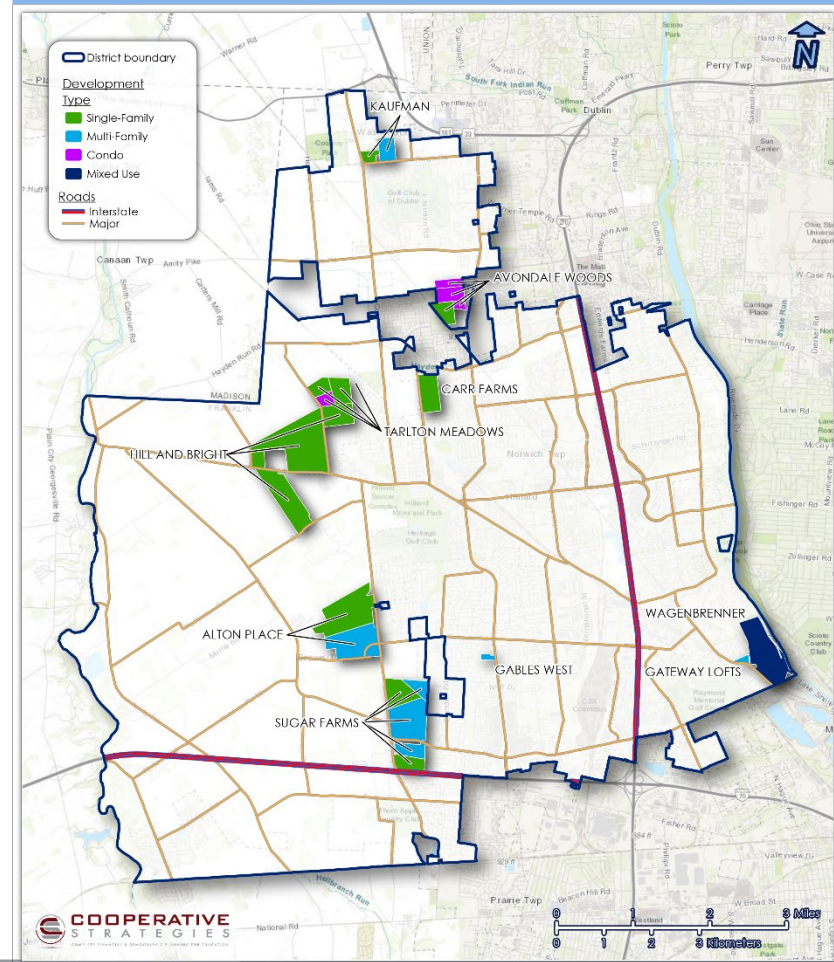
Student Density Grades K-12, 2018-19 School Year



Residential Housing Student Yields, 2018-19 School Year



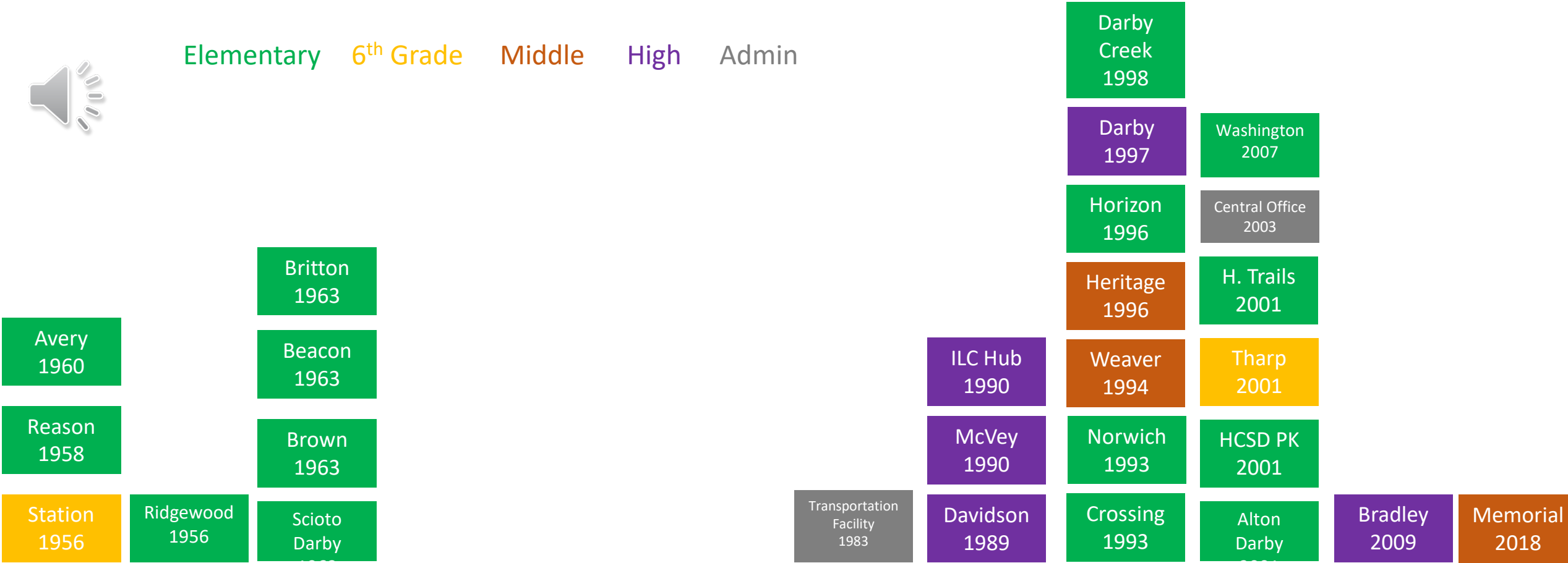
In-Progress and Pending Housing Developments as of February, 2019



HILLIARD CITY SCHOOLS BUILDING AGE



Elementary 6th Grade Middle High Admin





EDUCATIONAL FRAMEWORK QUESTIONNAIRE

- Feedback regarding **principle planning elements** of the MFP.
- These elements will help guide the District when considering **long term educational goals**
- Serve as a **framework** in making **facility planning decisions**.

Educational Framework Questionnaire

https://www.surveymonkey.com/r/Hilliard_CD1