



Educational Framework October 26, 2022

Educational Framework



Purpose

- **Purpose** | To gather feedback regarding principal planning elements of the Master Facilities Plan.
 - Elements such as **school size, future programming, adequacy** and **condition of a facility**, and choices of replacement versus renovation, will help guide the District when considering **long term educational goals** and serve as a framework in making facility planning decisions.

Master Facilities Plan



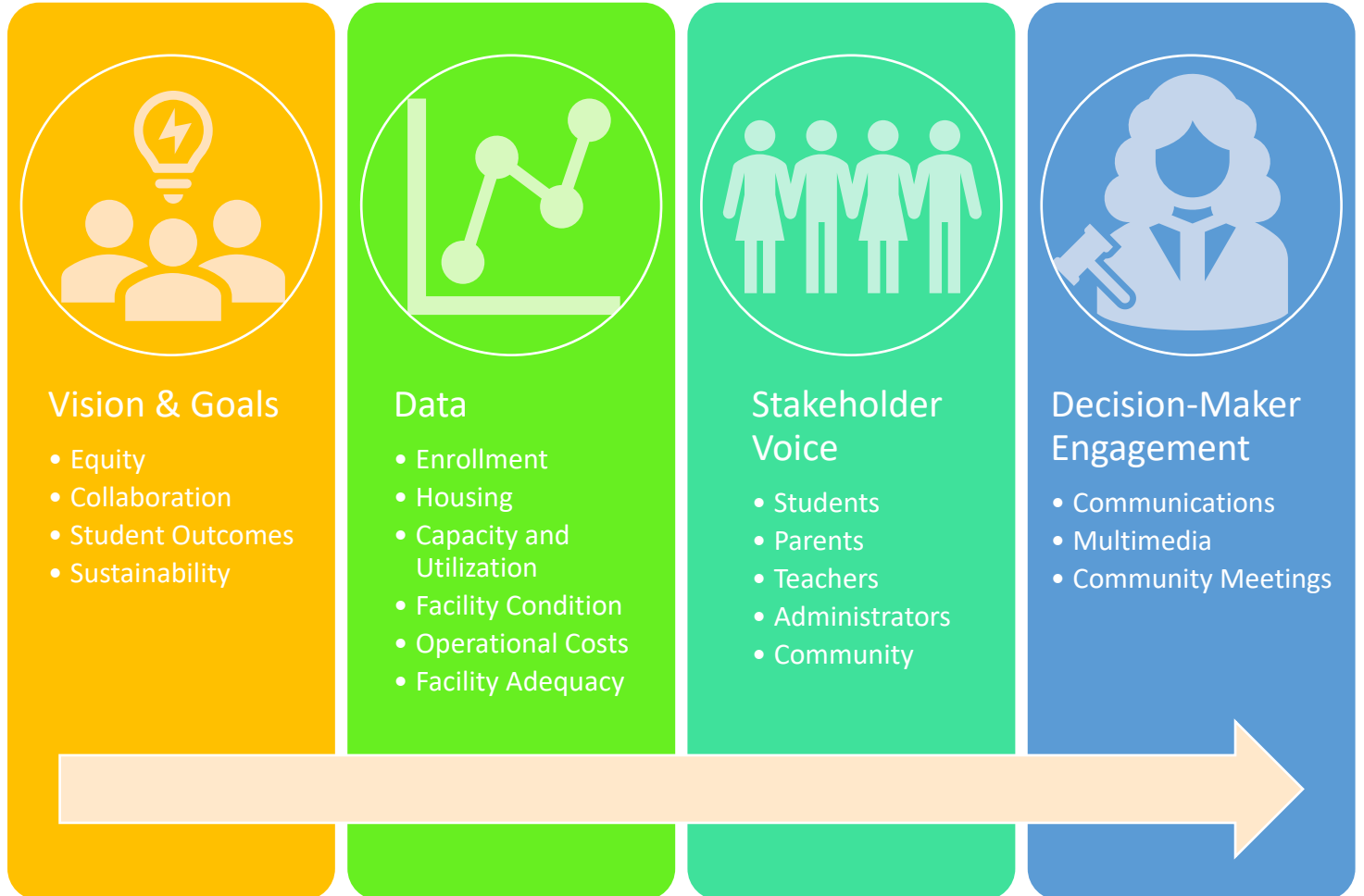
What is it?

- A Master Facilities Plan is the product of a **data-driven process** that guides capital planning decisions over the next 5-10 years. The process takes into account community and stakeholder feedback which results in **transparent decisions** about:
 - Educational programs
 - Facility use
 - Capital investment
- A Master Facilities Plan addresses many key questions:
 - **What kind of schools** will best prepare students and inspire them to achieve their full potential for the future?
 - **How many students** will attend our schools in five years? Ten years?
 - **What is the right number, size, and location of schools** to best serve these students?
 - Where do we need **new schools**? Which current buildings should be **replaced**? **expanded**? **modernized**? **repurposed**?
 - What is the **cost** and **schedule** to make these changes?

Master Facilities Plan

Goals

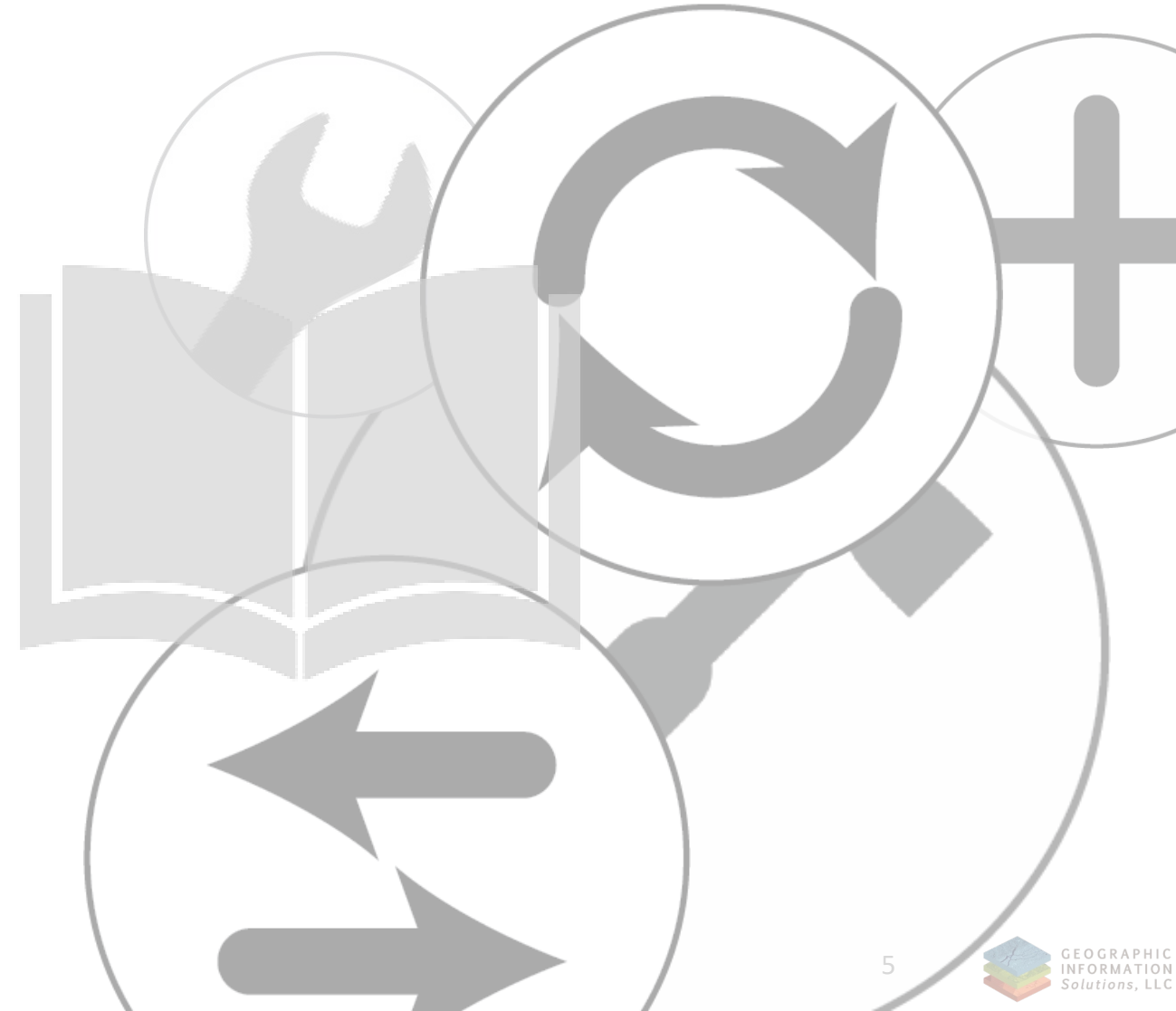
- Modern, flexible facilities that enable collaborative learning and positive student outcomes.
- Equitably allocated resources informed by data, local priorities, and student voice.
- Sustainable funding for school facilities and programs.
- Coordinated implementation of projects with transparency and accountability.
- Roadmap for the future direction of facility improvements



Master Facilities Plan

Possible Outcomes

- Facility renovations
- Replacement
- Repurpose
- New facilities
- Additions
- Attendance boundary adjustments
- Attendance policy changes
- Grade reconfiguration
- Feeder pattern adjustments
- Consolidation
- Program expansion
- Public, private partnerships (PPP)



Educational Framework Questionnaire

For more information and MFP data,
go to:

<https://www.hilliardschools.org/mfp>

To take the survey, use any of the methods
below.

- <https://www.menti.com/aln95t2gosij>
- <https://www.hilliardschools.org/mfp>
- point your phone's camera
here:

